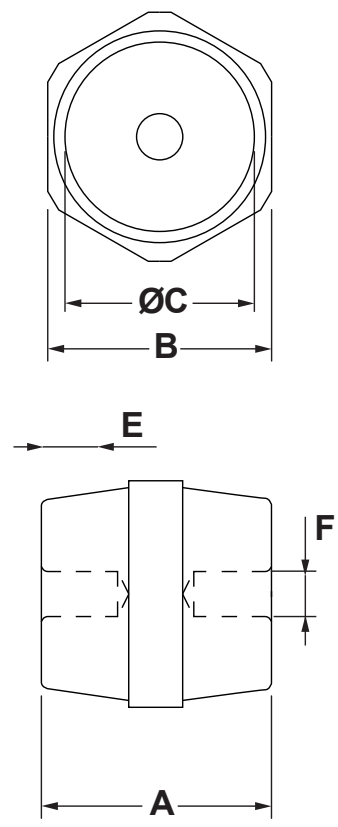


P/N	F	E	TIGHTENING TORQUE N/m	A	C	B	OPERATING VOLTAGE	A.C. SURFACE FLASHOVER	TENSILE STRESS DN	CANTILEVER STRESS DN	TWISTING STRESS N/m
22780PT04	M4	5	3	16	12	15	660V-4500V	500V	150	70	3
22800PT04	M5	5	3	16	12	15	660V-4500V	500V	150	80	3
22801PT04	M5	7	4	20	16	19	660V-4500V	500V	170	80	4
22802PT04	M5	8	4	25	15	19	660V-4500V	500V	370	80	4
22822PT04	M6	8	4	25	15	19	660V-4500V	500V	370	100	4
22782PT04	M4	8	4	25	18	22	660V-4500V	500V	170	70	4
22806PT04	M5	8	4	25	18	22	660V-4500V	500V	190	80	4
22865PT04	M8	9	5	25	21	25	660V-4500V	500V	370	360	5
22880PT04	M10	9	20	30	25	30	660V-4500V	1000V	800	320	20
22866PT04	M8	9	15	30	25	30	660V-4500V	1000V	650	360	15
22881PT04	M10	9	20	30	33,5	40	660V-4500V	1000V	1500	320	20
22868PT04	M8	9	15	30	33,5	40	660V-4500V	1000V	1200	320	15
22882PT04	M10	10	20	35	28,5	32	660V-4500V	1400V	800	320	20
22827PT04	M6	10	8	35	28,5	32	660V-4500V	1400V	720	200	8
22867PT04	M8	10	15	35	28,5	32	660V-4500V	1400V	900	380	15
22883PT04	M10	10	20	35	28,5	40	660V-4500V	1400V	1100	620	20
22869PT04	M8	10	15	35	33	40	660V-4500V	1400V	1200	620	15
22884PT04	M10			35	33	41	660V-4500V	1400V	1100	620	
22828PT04	M6			35	35	41	660V-4500V	1400V	900	230	
22870PT04	M8			35	35	41	660V-4500V	1400V	1100	620	
22885PT04	M10	15	30	40	34	41	660V-4500V	2000V	1100	620	30
22871PT04	M8	14	25	40	34	41	660V-4500V	2000V	1200	620	25
22886PT04	M10	15	30	40	40	46	660V-4500V	2000V	1100	620	30
22901PT04	M12	15	35	40	40	46	660V-4500V	2000V	1100	620	35
22872PT04	M8	12	20	40	40	46	660V-4500V	2000V	1200	620	20
22887PT04	M10	15	30	45	39,5	46	660V-4500V	2000V	1100	620	30
22902PT04	M12	15	40	45	39,5	46	660V-4500V	2000V	1100	620	40
22873PT04	M8	14	20	45	39,5	46	660V-4500V	2000V	1200	620	20
22888PT04	M10	14	30	50	29	46	660V-4500V	2000V	1700	650	30
22829PT04	M6	10	8	50	29	36	660V-4500V	2000V	1300	380	8
22874PT04	M8	14	20	50	29	36	660V-4500V	2000V	1800	620	20
22889PT04	M10	15	40	50	37	46	660V-4500V	2000V	1600	620	40
22890PT04	M10	15	40	50	45	50	660V-4500V	2000V	1600	650	40
22903PT04	M12	17	40	50	45	50	660V-4500V	2000V	1600	650	40
22875PT04	M8	14	20	50	45	50	660V-4500V	2000V	1600	650	20
22891PT04	M10	17	40	60	49,5	60	660V-4500V	2400V	1800	660	40
22876PT04	M8	14	20	60	49,5	60	660V-4500V	2400V	1600	660	20
22892PT04	M10	17	40	65	32	41	660V-4500V	2400V	1800	560	40
22904PT04	M12	17	40	65	32	41	660V-4500V	2400V	1800	560	40
22877PT04	M8	14	20	65	32	41	660V-4500V	2400V	1600	560	20
22893PT04	M10	17	40	70	52	60	660V-4500V	2400V	1800	750	40
22905PT04	M12	17	40	70	52	60	660V-4500V	2400V	1800	750	40
22910PT04	M16	22	40	70	52,0	60	660V-4500V	2400V	1800	750	40
22894PT04	M10	17	40	75	38,5	50	660V-4500V	2400V	1800	750	40
22906PT04	M12	17	40	75	38,5	50	660V-4500V	2400V	1800	750	40
22878PT04	M8	14	20	20	38,5	50	660V-4500V	2400V	1800	750	20
22781PT04	M4	6	4	20	16	19	660V-4500V	2400V	170	70	4
22821PT04	M6	7	5	20	16	19	660V-4500V	2400V	170	100	5
22823PT04	M6	8	6	25	18	22	660V-4500V	2400V	190	100	6
22825PT04	M6	9	8	30	25	30	660V-4500V	2400V	190	200	8



Material thread Insert: Steel with Zn coating
Body Material: Dough Moulding Compound

Working temperature: 40°C ~ +140°C

REV.	DESCRIPTION			TITLE: STANDOFF INSULATOR			DWG UNIT: MM		
	MATERIAL: SEE ABOVE COLOUR: RED			Modelled in RHINO 4.0			FILE:		
TOLLERANCES UNLESS NOTED				SHEET: 1 OF 1		DwN: 30/01/24		ChkD:	
SEE ABOVE				SCALE: NTS		DT: 24.01.30.22780.E		Part Number: SEE TABLE	
DATE									