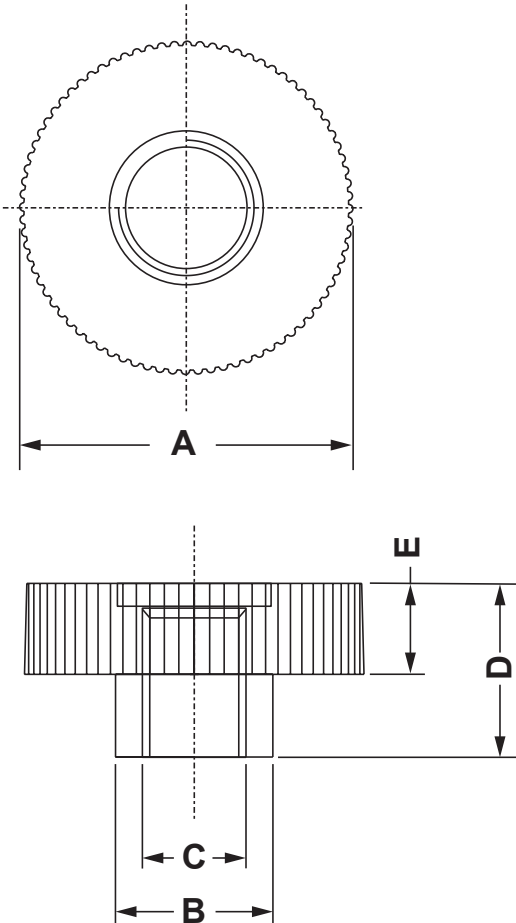



DIM.	TOL.
5mm DOWN	±0.2
5~20mm	±0.3
20~40mm	±0.4
40~60mm	±0.5
60~100mm	±0.8
100mm UP	±1.0

REVISIONS			
REV	DESCRIPTION	DATE	BY

P/N	A	B	C	D	E	DIN
10382AA00	12,0	7,0	M 3	7,0	3,5	DIN 466
10390AA00	12,0	8,5	M 3	5,0	3,5	DIN 467
10383AA00	12,0	7,0	M 4	7,0	3,5	DIN 466
10391AA00	14,0	8,5	M 4	5,0	3,5	DIN 467
10392AA00	16,0	10,0	M 4	6,0	4,5	DIN 467
10385AA00	16,0	9,5	M 4	8,0	4,5	DIN 466
10397AA00	20,0	10,0	M 4	7,5	6,0	DIN 467
10384AA00	14,0	8,8	M 5	7,0	3,5	DIN 466
10393AA00	16,0	10,0	M 5	6,0	4,5	DIN 467
10386AA00	16,0	9,5	M 5	8,0	4,5	DIN 466
10395AA00	19,0	10,0	M 5	7,5	6,0	DIN 467
10388AA00	20,0	13,0	M 5	11,0	6,0	DIN 466
10394AA00	16,0	10,0	M 6	6,0	4,5	DIN 467
10387AA00	16,0	9,5	M 6	8,0	4,5	DIN 466
10396AA00	19,0	10,0	M 6	7,5	6,0	DIN 467
10389AA00	20,0	13,0	M 6	11,0	6,0	DIN 466
10398AA00	24,0	13,0	M 8	7,5	6,0	DIN 467



	DESCRIPTION			TITLE: KNURLED NUTS				DWG UNIT: MM
	MATERIAL:	PA 6		Modelled in RHINO 4.0		FILE:	DwN: 19/11/21	ChkD:
	COLOUR:	NATURAL		TOLLERANCES UNLESS NOTED		SHEET: 1 OF 1	DT:21.11.19.XXXXX.0.E	
				SEE ABOVE		SCALE: NTS	Part Number: SEE TABLE	
REV.			DATE	