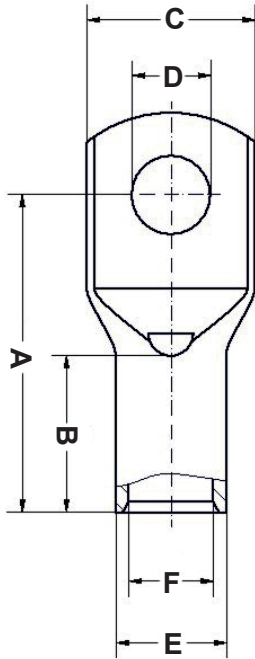


REVISIONS			
REV	DESCRIPTION	DATE	BY

P/N	A	B	C	D	E	F	Section mm²	Hole
16892ZG91	14,0	6,0	6,5	3,2	3,9	1,9	1,0 - 1,5	3,0
16893ZG91	15,0	6,0	8,5	4,3	3,9	1,9	1,0 - 1,5	4,0
16894ZG91	16,0	6,0	10,0	5,3	3,9	1,9	1,0 - 1,5	5,0
16895ZG91	18,5	6,0	11,0	6,4	3,9	1,9	1,0 - 1,5	6,0
16896ZG91	27,5	10,0	18,0	10,5	6,7	4,3	10,5	10,0
16897ZG91	28,5	10,0	19,0	13,0	6,7	4,3	10,0	10,0
16898ZG91	32,5	10,0	4,3	10,0	4,3	6,7	10,0	4,0
16899ZG91	33,5	10,0	5,3	10,0	4,3	6,7	10,0	5,0
16900ZG91	35,5	11,0	6,4	10,0	4,3	6,7	10,0	6,0
16901ZG91	38,0	15,0	8,4	10,0	4,3	6,7	10,0	8,0
16896ZG91	40,5	18,0	10,5	10,0	4,3	6,7	10,0	10,0
16897ZG91	41,5	19,0	13,0	10,0	4,3	6,7	10,0	12,0
16904ZG91	36,5	12,0	5,3	11,0	5,4	7,8	16,0	5,0
16905ZG91	38,5	12,0	6,4	11,0	5,4	7,8	16,0	6,0
16906ZG91	26,5	11,0	15,4	8,4	5,4	7,8	16,0	8,0
16902ZG91	43,0	18,0	10,5	11,0	5,4	7,8	16,0	10,0
16903ZG91	44,0	20,0	13,0	11,0	5,4	7,8	16,0	12,0
16914ZG91	39,5	14,0	5,3	13,0	6,9	9,4	25,0	5,0
16915ZG91	41,5	14,0	6,4	13,0	6,9	9,4	25,0	6,0
16916ZG91	43,5	15,0	8,4	13,0	6,9	9,4	25,0	8,0
16911ZG91	46,0	18,0	10,5	13,0	6,9	9,4	25,0	10,0
16912ZG91	47,0	20,0	13,0	13,0	6,9	9,4	25,0	12,0
16913ZG91	49,0	22,0	15,0	13,0	6,9	9,4	25,0	14,0
16921ZG91	49,5	16,5	5,3	16,0	8,3	11,3	35,0	5,0
16922ZG91	49,5	16,5	6,4	16,0	8,3	11,3	35,0	6,0

P/N	A	B	C	D	E	F	Section mm²	Hole
16923ZG91	50,0	16,5	8,4	16,0	8,3	11,3	35,0	8,0
16917ZG91	52,5	18,0	10,5	16,0	8,3	11,3	35,0	10,0
16918ZG91	53,5	20,0	13,0	16,0	8,3	11,3	35,0	12,0
16919ZG91	56,0	22,0	15,0	16,0	8,3	11,3	35,0	14,0
16920ZG91	58,5	26,0	17,0	16,0	8,3	11,3	35,0	16,0
16956ZG91	53,0	19,0	6,4	18,0	9,6	13,1	50,0	6,0
16957ZG91	54,0	19,0	8,4	18,0	9,6	13,1	50,0	8,0
16951ZG91	56,0	20,0	10,5	18,0	9,6	13,1	50,0	10,0
16952ZG91	57,5	23,0	13,0	18,0	9,6	13,1	50,0	12,0
16953ZG91	59,5	25,0	15,0	18,0	9,6	13,1	50,0	14,0
16954ZG91	62,5	27,0	17,0	18,0	9,6	13,1	50,0	16,0
16955ZG91	67,0	28,0	21,0	18,0	9,6	13,1	50,0	20,0
16962ZG91	63,0	22,5	6,4	21,0	11,3	14,7	70,0	6,0
16963ZG91	63,0	22,5	8,4	21,0	11,3	14,7	70,0	8,0
16958ZG91	64,5	22,5	10,5	21,0	11,3	14,7	70,0	10,0
16959ZG91	65,5	23,0	13,0	21,0	11,3	14,7	70,0	12,0
16960ZG91	68,0	26,0	15,0	21,0	11,3	14,7	70,0	14,0
16961ZG91	70,5	28,0	17,0	21,0	11,3	14,7	70,0	16,0



**CABLE LUGS: 10 - 70 MM²
WITH INSPECTION HOLE**

	DESCRIPTION		TITLE: TUBULAR CABLE LUGS WITH NARROW FLANGE, COPPER	DWG UNIT: MM
	TERMINAL MATERIAL: COPPER CU-HCP 99.9% TINNED		Modelled in RHINO 4.0	FILE: DwN: 13/02/22
	INSULATION: PA 66		TOLLERANCES UNLESS NOTED	ChkD: DT: 22.02.13.168XX.0.E. Part Number: SEE TABLE
	COLOUR: BLACK		SEE ABOVE	SCALE: NTS
REV.		DATE		

