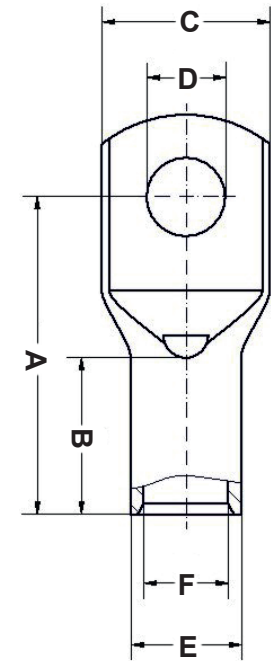


P/N	A	B	C	D	E	F	Section mm ²	Hole
16914ZG91	25,0	13,0	14,0	5,3	9,4	6,9	25,0	5,0
16915ZG91	27,0	13,0	14,0	6,4	9,4	6,9	25,0	6,0
16916ZG91	29,0	13,0	15,0	8,4	9,4	6,9	25,0	8,0
16917ZG91	31,5	13,0	18,0	10,5	9,4	6,9	25,0	10,0
16918ZG91	32,5	13,0	20,0	13,0	9,4	6,9	25,0	12,0
16913ZG91	34,5	13,0	22,0	15,0	9,4	6,9	25,0	14,0
16921ZG91	32,5	16,0	16,5	5,3	11,3	8,3	35,0	5,0
16922ZG91	32,5	16,0	16,5	6,4	11,3	8,3	35,0	6,0
16923ZG91	33,0	16,0	16,5	8,4	11,3	8,3	35,0	8,0
16917ZG91	35,5	16,0	18,0	10,5	11,3	8,3	35,0	10,0
16918ZG91	36,5	16,0	20,0	13,0	11,3	8,3	35,0	12,0
16919ZG91	39,0	16,0	22,0	15,0	11,3	8,3	35,0	14,0
16920ZG91	41,5	16,0	26,0	17,0	11,3	8,3	35,0	16,0
16956ZG91	36,0	18,0	19,0	6,4	13,1	9,6	50,0	6,0
16957ZG91	37,0	18,0	19,0	8,4	13,1	9,6	50,0	8,0
16951ZG91	39,0	18,0	20,0	10,5	13,1	9,6	50,0	10,0
16952ZG91	40,5	18,0	23,0	13,0	13,1	9,6	50,0	12,0
16953ZG91	42,5	18,0	25,0	15,0	13,1	9,6	50,0	14,0
16954ZG91	45,5	18,0	27,0	17,0	13,1	9,6	50,0	16,0
16955ZG91	50,0	18,0	28,0	21,0	13,1	9,6	50,0	20,0
16962ZG91	41,0	21,0	22,5	6,4	14,7	11,3	70,0	6,0
16963ZG91	41,0	21,0	22,5	8,4	14,7	11,3	70,0	8,0
16958ZG91	42,5	21,0	22,5	10,5	14,7	11,3	70,0	10,0
16959ZG91	43,5	21,0	23,0	13,0	14,7	11,3	70,0	12,0
16960ZG91	46,0	21,0	26,0	15,0	14,7	11,3	70,0	14,0
16961ZG91	48,5	21,0	28,0	17,0	14,7	11,3	70,0	16,0
16969ZG91	46,0	23,0	25,0	6,4	17,5	13,5	95,0	6,0
16970ZG91	45,5	23,0	25,0	8,4	17,5	13,5	95,0	8,0
16964ZG91	47,0	23,0	25,0	10,5	17,5	13,5	95,0	10,0
16965ZG91	47,0	23,0	26,0	13,0	17,5	13,5	95,0	12,0
16966ZG91	49,0	23,0	26,0	15,0	17,5	13,5	95,0	14,0
16967ZG91	50,0	23,0	28,0	17,0	17,5	13,5	95,0	16,0
16968ZG91	54,5	23,0	31,0	21,0	17,5	13,5	95,0	20,0
16938ZG91	50,5	26,0	29,0	8,4	20,0	15,5	120,0	8,0
16933ZG91	53,0	26,0	29,0	10,5	20,0	15,5	120,0	10,0
16934ZG91	52,5	26,0	29,0	13,0	20,0	15,5	120,0	12,0

P/N	A	B	C	D	E	F	Section mm ²	Hole
16935ZG91	53,5	26,0	29,0	15,0	20,0	15,5	120,0	14,0
16936ZG91	55,0	26,0	29,0	17,0	20,0	15,5	120,0	16,0
16937ZG91	60,0	26,0	35,0	21,0	20,0	15,5	120,0	20,0
16944ZG91	55,5	29,0	31,0	8,4	21,3	16,8	150,0	8,0
16939ZG91	56,5	29,0	31,0	10,5	21,3	16,8	150,0	10,0
16940ZG91	56,0	29,0	31,0	13,0	21,3	16,8	150,0	12,0
16941ZG91	57,0	29,0	31,0	15,0	21,3	16,8	150,0	14,0
16942ZG91	58,0	29,0	31,0	17,0	21,3	16,8	150,0	16,0
16943ZG91	63,0	29,0	35,0	21,0	21,3	16,8	150,0	20,0
16950ZG91	58,0	30,0	35,0	8,4	24,0	19,0	185,0	8,0
16945ZG91	59,0	30,0	35,0	10,5	24,0	19,0	185,0	10,0
16946ZG91	58,5	30,0	35,0	13,0	24,0	19,0	185,0	12,0
16947ZG91	61,0	30,0	35,0	15,0	24,0	19,0	185,0	14,0
16948ZG91	63,0	30,0	35,0	17,0	24,0	19,0	185,0	16,0
16949ZG91	66,0	30,0	35,0	21,0	24,0	19,0	185,0	20,0
16976ZG91	69,0	35,0	39,0	8,4	27,3	21,1	240,0	8,0
16971ZG91	69,0	35,0	39,0	10,5	27,3	21,1	240,0	10,0
16972ZG91	69,0	35,0	39,0	13,0	27,3	21,1	240,0	12,0
16973ZG91	71,0	35,0	39,0	15,0	27,3	21,1	240,0	14,0
16974ZG91	71,5	35,0	39,0	17,0	27,3	21,1	240,0	16,0
16975ZG91	73,0	35,0	39,0	21,0	27,3	21,1	240,0	20,0
16977ZG91	79,5	42,0	44,0	10,5	30,0	24,0	300,0	10,0
16978ZG91	82,0	42,0	44,0	13,0	30,0	24,0	300,0	12,0
16979ZG91	84,0	42,0	44,0	15,0	30,0	24,0	300,0	14,0
16980ZG91	85,0	42,0	44,0	17,0	30,0	24,0	300,0	16,0
16981ZG91	85,0	42,0	44,0	21,0	30,0	24,0	300,0	20,0
16982ZG91	94,0	42,0	51,0	10,5	35,0	27,0	400,0	10,0
16983ZG91	94,0	42,0	51,0	13,0	35,0	27,0	400,0	12,0
16984ZG91	94,0	42,0	51,0	15,0	35,0	27,0	400,0	14,0
16985ZG91	94,0	42,0	51,0	17,0	35,0	27,0	400,0	16,0
16986ZG91	94,0	42,0	51,0	21,0	35,0	27,0	400,0	20,0
16987ZG91	113,0	70,0	55,5	13,0	38,0	31,0	500,0	12,0
16988ZG91	113,0	70,0	55,5	17,0	38,0	31,0	500,0	16,0
16989ZG91	113,0	70,0	55,5	21,0	38,0	31,0	500,0	20,0
16990ZG91	131,0	70,0	61,0	17,0	41,0	34,0	630,0	16,0
16991ZG91	131,0	70,0	61,0	21,0	41,0	34,0	630,0	20,0

REVISIONS			
REV	DESCRIPTION	DATE	BY



NOTES:
 -CABLE LUGS: 1,5 -630 MM2
 -WITH INSPECTION HOLE

DESCRIPTION		TITLE: TUBULAR CABLE LUGS FOR FLEXIBLE CONDUCTORS		DWG UNIT: MM	
MATERIAL: COPPER CU-ETP 99.9% tinned		Modelled in RHINO 4.0		FILE:	DwN: 06/12/21
COLOUR: NATURAL		TOLLERANCES UNLESS NOTED	SHEET: 1 OF 1	DT: 21.12.06.16XXX.0.E	ChkD: Part Number: SEE TABLE
		SEE ABOVE	SCALE: NTS		
REV.		DATE			

