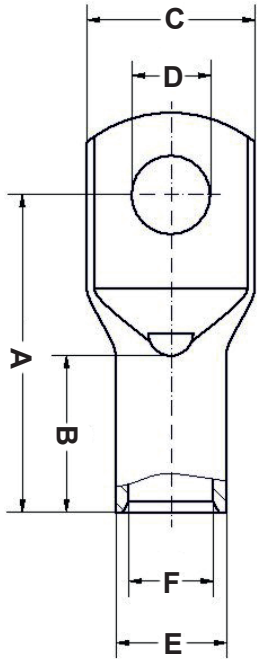


REVISIONS			
REV	DESCRIPTION	DATE	BY

P/N	A	B	C	D	E	F	Section mm <sup>2</sup>	Hole
16898ZG91	32,5	10,0	4,3	10,0	4,3	6,7	10,0	4,0
16899ZG91	33,5	10,0	5,3	10,0	4,3	6,7	10,0	5,0
16900ZG91	35,5	11,0	6,4	10,0	4,3	6,7	10,0	6,0
16901ZG91	38,0	15,0	8,4	10,0	4,3	6,7	10,0	8,0
16896ZG91	40,5	18,0	10,5	10,0	4,3	6,7	10,0	10,0
16897ZG91	41,5	19,0	13,0	10,0	4,3	6,7	10,0	12,0
16904ZG91	36,5	12,0	5,3	11,0	5,4	7,8	16,0	5,0
16905ZG91	38,5	12,0	6,4	11,0	5,4	7,8	16,0	6,0
16906ZG91	40,5	15,0	8,4	11,0	5,4	7,8	16,0	8,0
16902ZG91	43,0	18,0	10,5	11,0	5,4	7,8	16,0	10,0
16903ZG91	44,0	20,0	13,0	11,0	5,4	7,8	16,0	12,0
16914ZG91	39,5	14,0	5,3	13,0	6,9	9,4	25,0	5,0
16915ZG91	41,5	14,0	6,4	13,0	6,9	9,4	25,0	6,0
16916ZG91	43,5	15,0	8,4	13,0	6,9	9,4	25,0	8,0
16911ZG91	46,0	18,0	10,5	13,0	6,9	9,4	25,0	10,0
16912ZG91	47,0	20,0	13,0	13,0	6,9	9,4	25,0	12,0
16913ZG91	49,0	22,0	15,0	13,0	6,9	9,4	25,0	14,0
16921ZG91	49,5	16,5	5,3	16,0	8,3	11,3	35,0	5,0
16922ZG91	49,5	16,5	6,4	16,0	8,3	11,3	35,0	6,0

P/N	A	B	C	D	E	F	Section mm <sup>2</sup>	Hole
16923ZG91	50,0	16,5	8,4	16,0	8,3	11,3	35,0	8,0
16917ZG91	52,5	18,0	10,5	16,0	8,3	11,3	35,0	10,0
16918ZG91	53,5	20,0	13,0	16,0	8,3	11,3	35,0	12,0
16919ZG91	56,0	22,0	15,0	16,0	8,3	11,3	35,0	14,0
16920ZG91	58,5	26,0	17,0	16,0	8,3	11,3	35,0	16,0
16956ZG91	53,0	19,0	6,4	18,0	9,6	13,1	50,0	6,0
16957ZG91	54,0	19,0	8,4	18,0	9,6	13,1	50,0	8,0
16951ZG91	56,0	20,0	10,5	18,0	9,6	13,1	50,0	10,0
16952ZG91	57,5	23,0	13,0	18,0	9,6	13,1	50,0	12,0
16953ZG91	59,5	25,0	15,0	18,0	9,6	13,1	50,0	14,0
16954ZG91	62,5	27,0	17,0	18,0	9,6	13,1	50,0	16,0
16955ZG91	67,0	28,0	21,0	18,0	9,6	13,1	50,0	20,0
16962ZG91	63,0	22,5	6,4	21,0	11,3	14,7	70,0	6,0
16963ZG91	63,0	22,5	8,4	21,0	11,3	14,7	70,0	8,0
16958ZG91	64,5	22,5	10,5	21,0	11,3	14,7	70,0	10,0
16959ZG91	65,5	23,0	13,0	21,0	11,3	14,7	70,0	12,0
16960ZG91	68,0	26,0	15,0	21,0	11,3	14,7	70,0	14,0
16961ZG91	70,5	28,0	17,0	21,0	11,3	14,7	70,0	16,0



**CABLE LUGS: 10 - 70 MM<sup>2</sup>  
WITH INSPECTION HOLE**

	DESCRIPTION	TITLE: TUBULAR CABLE LUGS WITH NARROW FLANGE, COPPER	DWG UNIT: MM
	TERMINAL MATERIAL: COPPER CU-HCP 99.9% TINNED	Modelled in RHINO 4.0	FILE:
	INSULATION: PA 66	TOLLERANCES UNLESS NOTED	SHEET: 1 OF 1
	COLOUR: BLACK	SEE ABOVE	SCALE: NTS
REV.		DATE	

DwN: 10/05/21  
ChkD:  
DT: 21.05.10.171XX.0.E. | Part Number: SEE TABLE