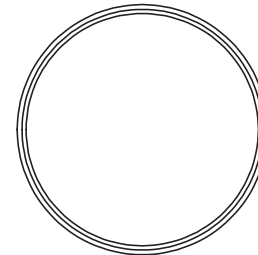
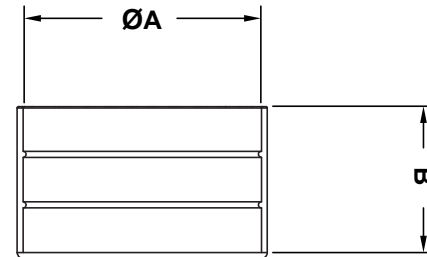


REVISIONS			
REV	DESCRIPTION	DATE	BY

P/N	A	B	Pipe
3892EA00	4,0	18,8	
3893EA00	5,0	18,8	
3894EA00	6,0	18,5	
3895EA00	6,35	18,5	
3896EA00	7,0	18,5	
3897EA00	8,0	19,8	
3898EA00	9,6	18,8	
3899EA00	10,0	18,8	1/8"
3900EA00	11,0	19,7	
3901EA00	12,0	19,6	
3902EA00	12,7	19,9	
3903EA00	13,0	19,9	
3904EA00	13,7	19,9	1/4"
3905EA00	14,0	16,7	
3906EA00	15,0	20,1	
3907EA00	15,5	16,7	
3908EA00	16,0	16,7	
3909EA00	17,2	18,0	3/8"
3910EA00	18,0	18,0	
3911EA00	18,5	18,0	
3912EA00	19,0	18,0	
3913EA00	20,0	20,2	
3914EA00	21,3	20,8	1/2"
3915EA00	22,0	20,8	
3916EA00	23,2	21,0	
3917EA00	24,0	21,0	
3919EA00	25,4	21,0	
3920EA00	26,0	25,0	

P/N	A	B	Pipe
3921EA00	26,9	25,0	3/4"
3922EA00	28,5	25,0	
3923EA00	30,0	25,6	
3924EA00	31,8	19,2	
3925EA00	33,7	19,2	1"
3926EA00	35,0	25,6	
3927EA00	38,0	20,6	
3929EA00	40,0	25,6	
3930EA00	41,3	20,0	
3931EA00	42,4	25,3	1.1/4"
3932EA00	44,5	21,2	
3933EA00	45,4	21,2	
3934EA00	47,5	25,0	
3935EA00	48,3	30,0	1.1/2"
3936EA00	51,0	29,5	
3937EA00	52,0	30,8	
3938EA00	52,8	30,8	
3939EA00	54,0	30,0	1.3/4"
3940EA00	55,0	30,0	
3941EA00	57,0	30,0	
3943EA00	60,3	27,8	2"
3944EA00	63,5	28,0	
3945EA00	65,0	28,0	
3946EA00	67,0	35,4	
3947EA00	70,0	35,4	
3948EA00	73,0	29,0	2.1/2"
3949EA00	75,0	29,0	
3950EA00	76,2	29,0	2.1/2"

P/N	A	B	Pipe
3951EA00	77,0	30,5	
3952EA00	78,0	30,5	
3953EA00	80,0	30,5	
3955EA00	82,0	30,5	
3956EA00	83,0	30,5	
3957EA00	85,0	30,5	
3958EA00	88,9	35,6	3"
3959EA00	92,4	30,0	
3960EA00	95,0	39,0	
3961EA00	98,0	31,0	
3962EA00	100,0	31,0	
5347EA00	101,6	29,5	3.1/2"
5348EA00	103,0	41,0	
5350EA00	108,0	38,6	
5351EA00	110,0	38,6	
5352EA00	114,3	40,3	4"
5354EA00	117,5	41,5	
5355EA00	121,0	39,0	
5356EA00	125,0	39,0	
5357EA00	127,0	36,2	
5358EA00	130,0	40,0	
5359EA00	133,0	40,0	
5360EA00	136,0	40,0	
5361EA00	138,0	32,5	
5362EA00	139,7	40,0	5"
5363EA00	141,3	40,0	5"
5364EA00	146,0	40,0	
5365EA00	148,0	39,0	



REV.	DESCRIPTION	TITLE: ROUND TUBE END CAPS	DWG UNIT: MM
	MATERIAL: LD-PE	Modelled in RHINO 4.0	FILE:
	COLOUR: NATURAL	TOLLERANCES UNLESS NOTED	SHEET: 1 OF 1
	WORKING TEMPERATURE: -30°C ~ +70°C	SEE ABOVE	SCALE: NTS
	DATE		

DwN: 16/04/21 ChkD: DT: 21.04.16.XXXX.0.E. Part Number: SEE TABLE