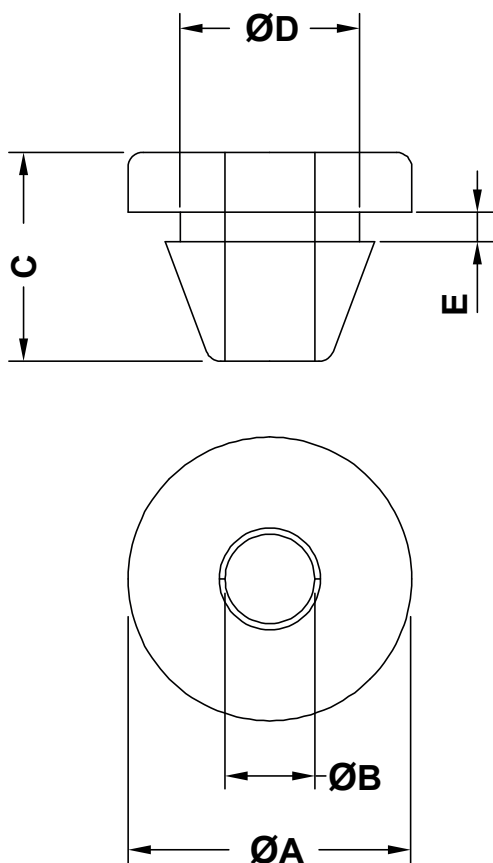
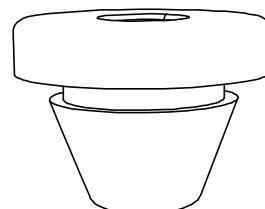


DIM.	TOL.
5mm DOWN	±0.2
5~20mm	±0.3
20~40mm	±0.4
40~60mm	±0.5
60~100mm	±0.8
100mm UP	±1.0




REVISIONS			
REV	DESCRIPTION	DATE	BY



P/N	ØA	ØB	C	ØD	E
4507CA01	9,5	2,0	9,0	6,0	3,0
4513CA01	9,5	3,5	9,0	6,0	3,0
4518CA01	9,5	4,5	8,0	6,0	2,0
4516CA01	9,5	4,0	9,0	6,0	3,0
4515CA01	9,5	4,0	8,0	6,0	2,0
4511CA01	9,5	3,0	9,0	6,0	3,0
4509CA01	9,5	2,5	9,0	6,0	3,0
4508CA01	9,5	2,5	8,0	6,0	2,0
4506CA01	9,5	2,0	8,0	6,0	2,0
4519CA01	9,5	4,5	9,0	6,0	3,0
1234CA01	11,0	5,0	9,0	7,0	1,5
0848CA01	13,5	7,0	9,0	11,0	2,0
1034CA01	20,0	8,0	13,0	12,0	1,0
1033CA01	20,0	6,0	13,0	13,0	12,0
1036CA01	28,0	12,0	15,0	15,0	16,0
1035CA01	28,0	10,0	15,0	15,0	16,0
1032CA01	39,0	20,0	17,0	17,0	25,0
1031CA01	39,0	18,0	17,0	17,0	25,0

WORKING TEMPERATURE: -25°C....+60°C

				TITLE SLEEVED GROMMETS	
				MATERIAL PVC	DATE 17/05/2022
PART NUMBER SEE TABLE				COLOR BLACK	DRAWN A.C.
DRAWING NUMBER 22.05.17.XXXX.0.E				CHECK	APPROVED
SIZE A4	SCALE NTS	UNIT mm.	REV A	UNLESS OTHERWISE SPECIFIED TOLERANCE SEE ABOVE	