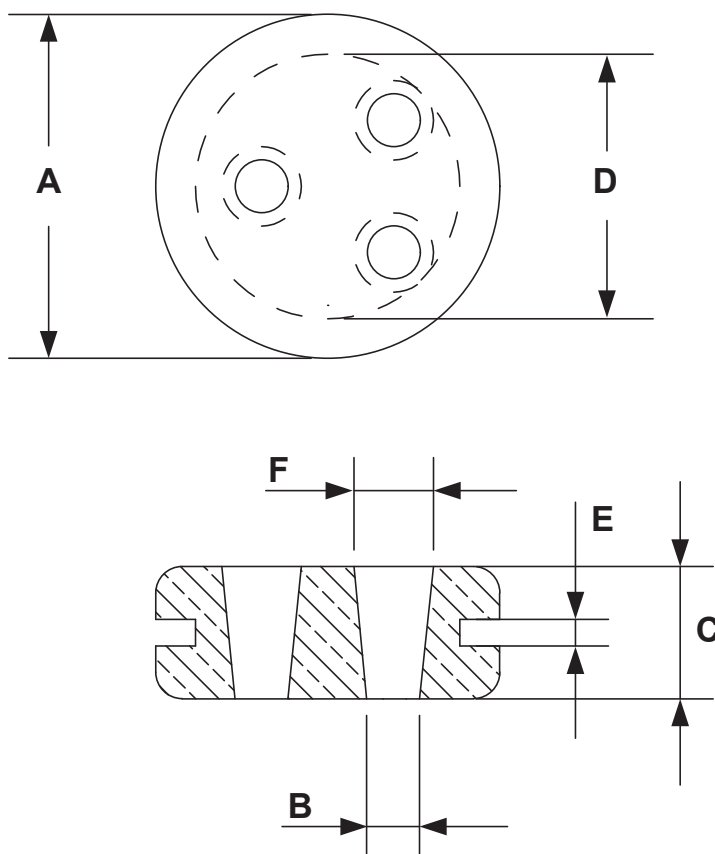



DIM.	TOL.
5mm DOWN	±0.2
5~20mm	±0.3
20~40mm	±0.4
40~60mm	±0.5
60~100mm	±0.8
100mm UP	±1.0

REVISIONS			
REV	DESCRIPTION	DATE	BY



	A	B	C	D	E	F	CLOSED HOLES
10910CA01	13,0	2,0	6,0	10,0	2,0	3,0	0
10911CA01	13,0	2,0	7,0	10,0	3,0	3,0	0
13280CA01	13,0	2,0	6,0	10,0	2,0	3,0	2
5393CA01	13,0	2,0	6,0	10,0	2,0	3,0	3
5480CA01	13,0	2,0	7,0	10,0	3,0	3,0	2

				TITLE SOFT SPECIAL CABLE GROMMETS	
				MATERIAL PVC HB (UL94)	DATE 19/05/2022
PART NUMBER				COLOR BLACK	DRAWN A.C.
				UNLESS OTHERWISE SPECIFIED TOLERANCE SEE ABOVE	CHECK
SIZE A4	SCALE NTS	UNIT mm.	REV A	APPROVED	