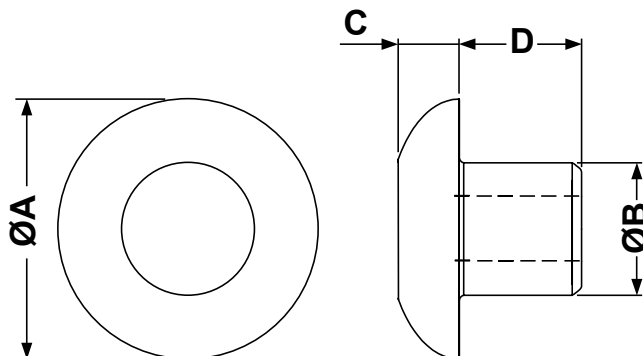



DIM.	TOL.
5mm DOWN	±0.2
5~20mm	±0.3
20~40mm	±0.4
40~60mm	±0.5
60~100mm	±0.8
100mm UP	±1.0

REVISIONS			
REV	DESCRIPTION	DATE	BY



P/N	A	B	C	D	Material
0426CA01	9,5	5,0	3,0	6,0	Soft PVC
0426EA01	9,5	5,0	3,0	6,0	PE-LD
0427CA01	12,0	6,0	3,0	7,5	Soft PVC
0427EA01	12,0	6,0	3,0	7,5	PE-LD
0428CA01	14,0	6,0	4,0	15,0	Soft PVC
0428EA01	14,0	6,0	4,0	15,0	PE-LD
0966CA01	10,0	8,0	3,0	9,0	Soft PVC
0429CA01	18,0	8,0	5,0	15,0	Soft PVC
0429EA01	18,0	8,0	5,0	15,0	PE-LD
0430CA01	20,0	8,0	5,0	15,0	Soft PVC
0430EA01	20,0	8,0	5,0	15,0	PE-LD
0431CA01	24,0	11,0	5,0	13,0	Soft PVC
0431EA01	24,0	11,0	5,0	13,0	PE-LD

				TITLE FEETS AND PUSH-IN BUMPERS	
				MATERIAL SEE TABLE	
PART NUMBER SEE TABLE				DRAWN R.F.	
				DRAWING NUMBER 21.11.09.XXXX.0.E	
SIZE A4		SCALE NTS		COLOR BLACK	
UNIT mm.		REV A		UNLESS OTHERWISE SPECIFIED TOLERANCE SEE ABOVE	
				APPROVED	