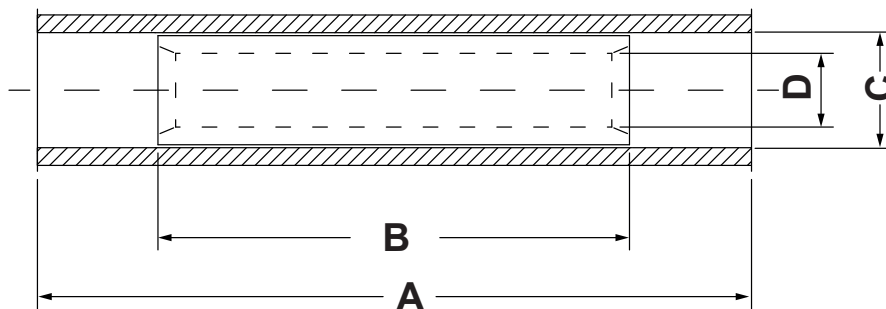


DIM.	TOL.
5mm DOWN	±0.2
5~20mm	±0.3
20~40mm	±0.4
40~60mm	±0.5
60~100mm	±0.8
100mm UP	±1.0



REVISIONS			
REV	DESCRIPTION	DATE	BY



P/N	A	B	C	D	Section mm <sup>2</sup>	Colour
<b>16560CA04</b>	17,0	7,0	3,2	1,7	0,5 - 1,0	<i>Red</i>
<b>16562CA08</b>	17,0	7,0	4,0	2,3	1,5 - 2,5	<i>Blue</i>
<b>16564CA06</b>	21,2	7,0	5,4	3,6	4,0 - 6,0	<i>Yellow</i>

**NOTES:**

-RATED VOLTAGE 300V MAX.

-WORKING TEMP. 105°C MAX.

-ISOLATION: PA 66; TERMINAL MATERIAL: COPPER TINNED CU-ETP 99.9%

				TITLE <b>PVC INSULATED BUTT CONNECTORS</b>	
				MATERIAL SEE ABOVE	DATE 21/04/2022
PART NUMBER SEE TABLE				DRAWN A.C.	
				DRAWING NUMBER 22.04.21.1656.E	
SIZE A4				CHECK	
				COLOR SEE TABLE	
SCALE NTS				APPROVED	
				UNLESS OTHERWISE SPECIFIED TOLERANCE SEE ABOVE	
UNIT mm.				REV A	