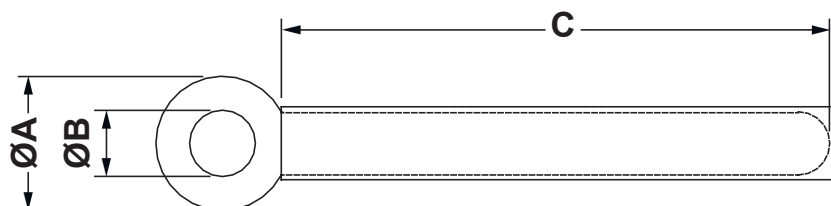


DIM.	TOL.
5mm DOWN	±0.2
5~20mm	±0.3
20~40mm	±0.4
40~60mm	±0.5
60~100mm	±0.8
100mm UP	±1.0

REVISIONS			
REV	DESCRIPTION	DATE	BY




P/N	A	B	C
6655MC90PS	7,5	3,3	32,0
6656MC90PS	7,5	3,3	52,0
6657MC90PS	8,0	3,6	62,0
6658MC90PS	8,5	4,2	35,0
6659MC90PS	8,0	4,1	52,0
6660MC90PS	7,5	4,2	74,5
6661MC90PS	8,0	4,1	78,5
6662MC90PS	8,4	5,1	60,0
6663MC90PS	10,0	6,0	78,0

NOTES:

MATERIAL: STEEL

PLASTIC MATERIAL COVER: PVC

FLAMMABILITY PVC: HB (UL94)

		TITLE ADJUSTABLE STEEL CLAMP WITH PVC COATED	
		MATERIAL SEE ABOVE	DATE 24/11/2021
PART NUMBER SEE TABLE		DRAWING NUMBER 21.11.24.66XX.0.E	
DRAWN R.F.		COLOR BLACK	CHECK
SIZE A4	SCALE NTS	UNIT mm.	REV A
UNLESS OTHERWISE SPECIFIED TOLERANCE SEE ABOVE		APPROVED	