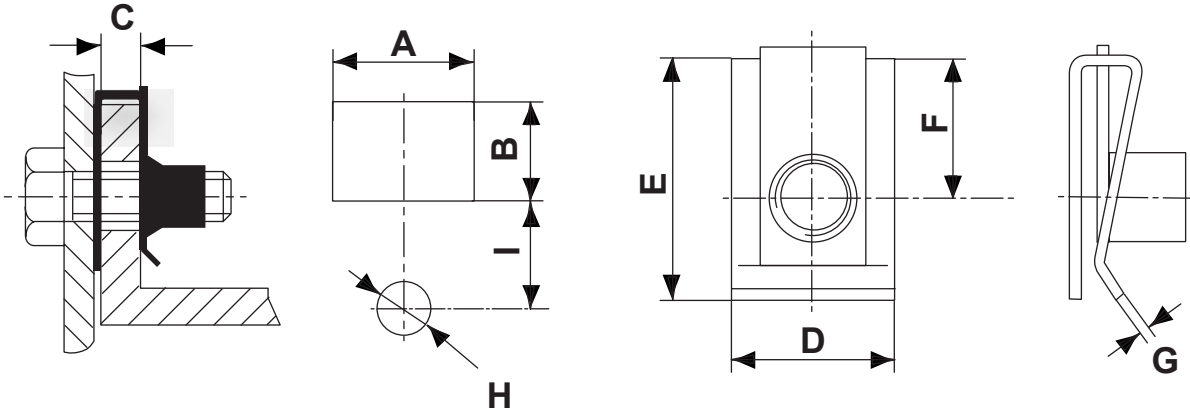


REVISIONS			
REV	DESCRIPTION	DATE	BY



P/N	Size	Surface treatment	A min.	B min.	C	D	E	F	G	H	I
20320MC97	M5	Anti-rust oil dipped	-	-	0,5-4	12,0	14,8	8,0	0,6	6,2	7,0
20321MC94	M5	White zinc-plated	-	-	0,5-4	12,0	14,8	8,0	0,6	6,2	7,0
20322MC98	M5	Geomet	-	-	0,5-4	14,0	19,6	10,6	0,6	6,2	9,4
20323MC94	M5	Zinc-plated + Nickel	16,0	10,0	0,5-4	14,5	22,0	12,2	0,6	7,7	10,0
20324MC97	M6	Anti-rust oil dipped	17,0	15,0	0,5-4	15,0	22,0	12,2	0,75	9,2	11,0
20325MC98	M6	Geomet	17,0	15,0	0,5-4	15,0	22,0	12,2	0,75	9,2	11,0
20326MC94	M6	White zinc-plated	-	-	0,7-4	16,0	23,8	12,7	0,85	9,0	11,5
20327MC98	M6	Geomet	-	-	0,7-4	16,0	23,8	12,7	0,85	9,0	11,5
20328MC97	M8	Anti-rust oil dipped	18,0	16,0	0,5-4	16,6	24,3	14,5	1,0	11,2	13,0
20329MC94	M8	White zinc-plated	18,0	16,0	0,5-4	16,6	24,3	14,5	1,0	11,2	13,0

Material: Spring steel
Material cage: Spring steel

	DESCRIPTION	TITLE: CHYMNEY (LUG) NUT		DWG UNIT: MM
	MATERIAL: SEE ABOVE	Modelled in RHINO 4.0		FILE:
	TREATMENT: SEE TABLE	TOLLERANCES UNLESS NOTED	SHEET: 1 OF 1	DwN: 06/10/21
		SEE ABOVE	SCALE: NTS	DT: 21.10.06.XXXXX.0.E
				ChkD: Part Number: SEE TABLE
REV.		DATE		

