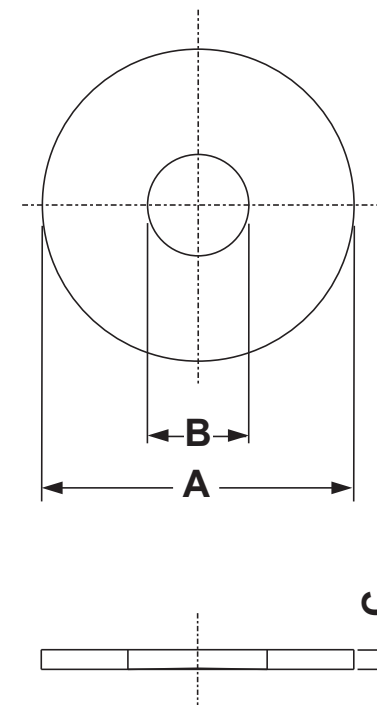


DIM.	TOL.
5mm DOWN	±0.2
5~20mm	±0.3
20~40mm	±0.4
40~60mm	±0.5
60~100mm	±0.8
100mm UP	±1.0

REVISIONS			
REV	DESCRIPTION	DATE	BY

P/N	M	A	B	C
10446AA00	M 2	5,0	2,2	0,3
10447AA00	M 2,3	6,0	2,5	0,5
10448AA00	M 2,5	6,0	2,7	0,5
10449AA00	M 2,5	6,5	2,7	0,5
10450AA00	M 3	7,0	3,2	0,5
10451AA00	M 3,5	8,0	3,7	0,5
10452AA00	M 4	9,0	4,3	0,8
10453AA00	M 5	10,0	5,3	1,0
10454AA00	M 6	12,0	6,4	1,6
10455AA00	M 7	14,0	7,4	1,6
10456AA00	M 8	16,0	8,4	1,6

P/N	M	A	B	C
10457AA00	M 10	20,0	10,5	2,0
10458AA00	M 12	24,0	13,0	2,5
10459AA00	M 14	28,0	15,0	2,5
10460AA00	M 16	30,0	17,0	3,0
10461AA00	M 18	34,0	19,0	3,0
10462AA00	M 20	37,0	21,0	3,0
10463AA00	M 22	39,0	23,0	3,0
10464AA00	M 24	44,0	25,0	4,0
10465AA00	M 26	50,0	27,0	4,0
10466AA00	M 27	50,0	28,0	4,0
10467AA00	M 28	50,0	29,0	4,0



**NOTES:**  
**WORKING TEMPERATURE: -30°C ~ +100°C**  
**STANDARD REFERENCE: DIN 34815 (EX DIN 125)**  
**M: SCREW THREAD TO MATCH**

REV.	DESCRIPTION	DATE	TITLE: WASHER DIN 34815 (DIN 125)	DWG UNIT: MM
	MATERIAL: PA 6		Modelled in RHINO 4.0	
	COLOUR: NATURAL		FILE:	DwN: 22/10/21
			TOLLERANCES UNLESS NOTED	ChkD:
			SEE ABOVE	DT: 21.10.22.XXXXX.0.E   Part Number: SEE TABLE
			SCALE: NTS	

