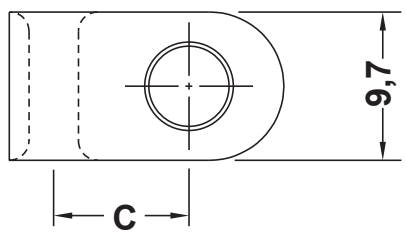
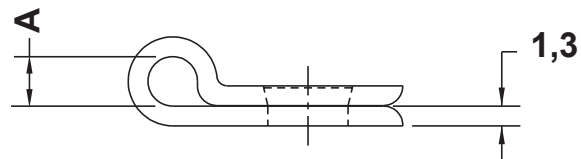


DIM.	TOL.
5mm DOWN	±0.2
5~20mm	±0.3
20~40mm	±0.4
40~60mm	±0.5
60~100mm	±0.8
100mm UP	±1.0

REVISIONS			
REV	DESCRIPTION	DATE	BY



CENTER TO CENTER



P/N	MOUNTING HOLE	SCREW	A	C
12485AA00	4,3	8	3,2	9,1
12486AA00	4,3	8	4,7	9,9
12487AA00	4,3	8	6,3	10,7
12488AA00	4,3	8	7,9	11,7
12489AA00	4,3	8	9,5	12,4
12490AA00	4,3	8	11,1	13,5
12491AA00	4,3	8	12,7	14,0
12492AA00	5,2	10	3,2	8,6
12493AA00	5,2	10	4,7	9,7
12494AA00	5,2	10	6,3	10,4
12495AA00	5,2	10	7,9	11,2
12496AA00	5,2	10	9,5	12,2
12497AA00	5,2	10	11,1	13,0
12498AA00	5,2	10	12,7	13,5

NOTES:

WORKING TEMPERATURE: - 0°C ~ +85°C
ON SPECIAL REQUEST AVAILABLE IN BLACK COLOUR

		TITLE CABLE CLAMPS		
		MATERIAL PA 66 V2(UL94)	DATE 12/10/2017	
PART NUMBER SEE TABLE		DRAWING NUMBER 17.10.12.124XX.0.E	COLOR NATURAL	CHECK
SIZE A4	SCALE NTS	UNIT mm	REV A	UNLESS OTHERWISE SPECIFIED TOLERANCE SEE ABOVE
		DRAWN R.F.		APPROVED