

| DIM. | TOL. |
|----------|------|
| 5mm DOWN | ±0.2 |
| 5~20mm | ±0.3 |
| 20~40mm | ±0.4 |
| 40~60mm | ±0.5 |
| 60~100mm | ±0.8 |
| 100mm UP | ±1.0 |

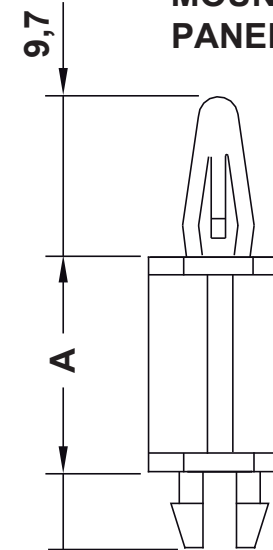
| REVISIONS | | | |
|-----------|-------------|------|----|
| REV | DESCRIPTION | DATE | BY |
| | | | |
| | | | |

| P/N | A |
|---------------|------|
| 10053AA0103.0 | 3.0 |
| 10053AA0104.0 | 4.0 |
| 10053AA0105.0 | 5.0 |
| 10053AA0106.0 | 6.0 |
| 10053AA0107.0 | 7.0 |
| 10053AA0108.0 | 8.0 |
| 10053AA0109.0 | 9.0 |
| 10053AA0110.0 | 10.0 |
| 10053AA0111.0 | 11.0 |
| 10053AA0112.0 | 12.0 |
| 10053AA0113.0 | 13.0 |
| 10053AA0114.0 | 14.0 |
| 10053AA0115.0 | 15.0 |
| 10053AA0116.0 | 16.0 |
| 10053AA0117.0 | 17.0 |
| 10053AA0118.0 | 18.0 |
| 10053AA0119.0 | 19.0 |
| 10053AA0120.0 | 20.0 |
| 10053AA0121.0 | 21.0 |
| 10053AA0122.0 | 22.0 |
| 10053AA0123.0 | 23.0 |
| 10053AA0124.0 | 24.0 |
| 10053AA0125.0 | 25.0 |
| 10053AA0126.0 | 26.0 |
| 10053AA0127.0 | 27.0 |

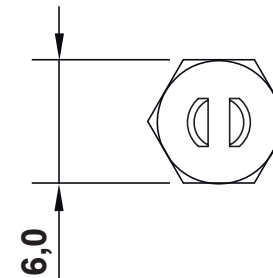
| P/N | A |
|---------------|------|
| 10053AA0128.0 | 28.0 |
| 10053AA0129.0 | 29.0 |
| 10053AA0130.0 | 30.0 |
| 10053AA0131.0 | 31.0 |
| 10053AA0132.0 | 32.0 |
| 10053AA0133.0 | 33.0 |
| 10053AA0134.0 | 34.0 |
| 10053AA0135.0 | 35.0 |
| 10053AA0136.0 | 36.0 |
| 10053AA0137.0 | 37.0 |
| 10053AA0138.0 | 38.0 |
| 10053AA0139.0 | 39.0 |
| 10053AA0140.0 | 40.0 |
| 10051AA0141.0 | 41.0 |
| 10053AA0142.0 | 42.0 |
| 10053AA0143.0 | 43.0 |
| 10053AA0144.0 | 44.0 |
| 10053AA0145.0 | 45.0 |
| 10053AA0146.0 | 46.0 |
| 10053AA0147.0 | 47.0 |
| 10053AA0148.0 | 48.0 |
| 10053AA0149.0 | 49.0 |
| 10053AA0150.0 | 50.0 |
| 10053AA0151.0 | 51.0 |
| 10053AA0152.0 | 52.0 |


| P/N | A |
|---------------|------|
| 10053AA0153.0 | 53.0 |
| 10053AA0154.0 | 54.0 |
| 10053AA0155.0 | 55.0 |
| 10053AA0156.0 | 56.0 |
| 10053AA0157.0 | 57.0 |
| 10053AA0158.0 | 58.0 |
| 10053AA0159.0 | 59.0 |
| 10053AA0160.0 | 60.0 |
| 10053AA0161.0 | 61.0 |
| 10053AA0162.0 | 62.0 |
| 10053AA0163.0 | 63.0 |
| 10053AA0164.0 | 64.0 |
| 10053AA0165.0 | 65.0 |

MOUNTING HOLE Ø3,2
PANEL THICKNESS 1,6mm



MOUNTING HOLE Ø4,0
PANEL THICKNESS 1,8mm



| | | | | | |
|-------------------------------------|--|----------------------------------|--|---|--|
| DESCRIPTION | | TITLE: DUAL LOCKING P.C.B SPACER | | DWG UNIT: MM | |
| MATERIAL: PA 66 HB(UL94) | | Modelled in RHINO 4.0 FILE: | | DwN: 15/07/21 ChkD: | |
| COLOUR: BLACK | | TOLLERANCES UNLESS NOTED | | DT:21.07.15.XXXXX.0.E Part Number: SEE TABLE | |
| WORKING TEMPERATURE: -35°C ~ +130°C | | SEE ABOVE | | SCALE: NTS | |
| REV. | | DATE | |  | |