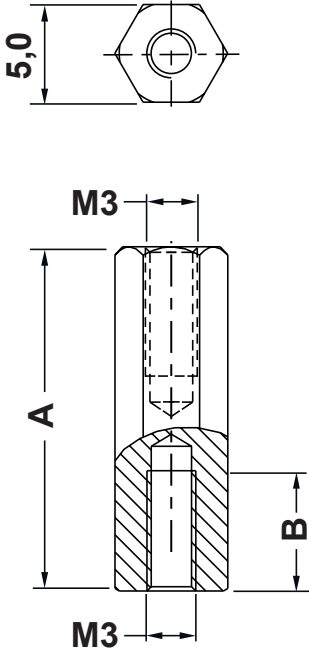


REVISIONS			
REV	DESCRIPTION	DATE	BY

P/N	A	B
10832MA9205.0	5.0	through
10832MA9206.0	6.0	through
10832MA9207.0	7.0	through
10832MA9208.0	8.0	through
10832MA9209.0	9.0	through
10832MA9210.0	10.0	through
10832MA9211.0	11.0	through
10832MA9212.0	12.0	through
10832MA9213.0	13.0	through
10832MA9214.0	14.0	through
10832MA9215.0	15.0	through
10832MA9216.0	16.0	8.0
10832MA9217.0	17.0	8.0

P/N	A	B
10832MA9218.0	18.0	8.0
10832MA9219.0	19.0	8.0
10832MA9220.0	20.0	8.0
10832MA9221.0	21.0	10.0
10832MA9222.0	22.0	10.0
10832MA9223.0	23.0	10.0
10832MA9224.0	24.0	10.0
10832MA9225.0	25.0	10.0
10832MA9226.0	26.0	10.0
10832MA9227.0	27.0	10.0
10832MA9228.0	28.0	10.0
10832MA9229.0	29.0	10.0
10832MA9230.0	30.0	10.0



	DESCRIPTION	TITLE: SPACER I/I BRASS	DWG UNIT: MM
MATERIAL:	BRASS DMS100	Modelled in RHINO 4.0	FILE:
SURFACE:	NICKEL PLATED G3E	TOLLERANCES UNLESS NOTED	SHEET: 1 OF 1
		SEE ABOVE	SCALE: NTS
REV.	DATE		

DwN: 09/06/21
 DT: 21.06.09.10832.0.E
 ChkD:
 Part Number: SEE TABLE