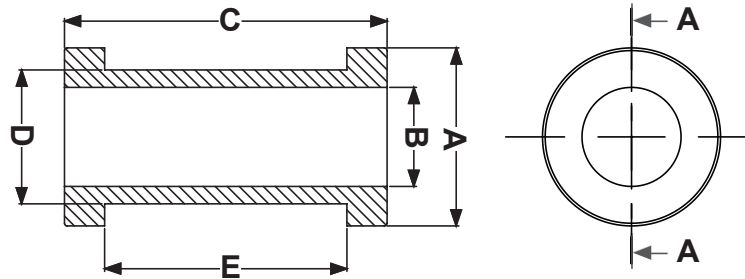


DIM.	TOL.
5mm DOWN	±0.2
5~20mm	±0.3
20~40mm	±0.4
40~60mm	±0.5
60~100mm	±0.8
100mm UP	±1.0


REVISIONS			
REV	DESCRIPTION	DATE	BY



SEZ. A - A

P/N	A	B	C	D	E
4687CA01	15,0	6,0	12,0	10,0	6
1270CA01	15,0	8,0	12,0	10,0	6,0
1271CA01	13,5	4,0	25,0	10,0	19,0
1272CA01	13,5	5,0	25,0	10,0	19,0
1273CA01	13,5	6,0	25,0	10,0	19,0
1274CA01	13,5	7,0	25,0	10,0	19,0
1275CA01	13,5	8,0	25,0	10,0	19,0
1276CA01	14,0	5,0	15,0	11,0	9,0
1278CA01	14,0	6,0	15,0	11,0	9,0
1280CA01	14,0	7,0	15,0	11,0	9,0
1282CA01	14,0	8,0	15,0	11,0	9,0
1288CA01	20,0	9,0	10,0	13,0	5,0
1283CA01	16,0	2,0	13,0	13,0	7,0
1284CA01	16,0	4,0	13,0	13,0	7,0
5062CA01	16,0	6,0	13,0	13,0	7,0
5063CA01	16,0	8,0	13,0	13,0	7,0
5064CA01	16,0	10,0	13,0	13,0	7,0
2374CA01	16,0	5,0	14,0	13,5	10,0
2375CA01	16,0	6,0	14,0	13,5	10,0

P/N	A	B	C	D	E
2376CA01	16,0	7,0	14,0	13,5	10,0
2377CA01	16,0	8,0	14,0	13,5	10,0
2378CA01	16,0	9,0	14,0	13,5	10,0
2379CA01	16,0	10,0	14,0	13,5	10,0
2380CA01	16,0	11,0	14,0	13,5	10,0
2349CA01	21,0	6,0	10,0	15,0	5,0
2350CA01	21,0	7,0	10,0	15,0	5,0
2351CA01	21,0	8,0	10,0	15,0	5,0
2352CA01	21,0	9,0	10,0	15,0	5,0
2353CA01	21,0	10,0	10,0	15,0	5,0
2354CA01	21,0	11,0	10,0	15,0	5,0
2355CA01	21,0	12,0	10,0	15,0	5,0
2363CA01	26,0	12,0	14,0	21,0	7,0
2364CA01	26,0	13,0	14,0	21,0	7,0
2365CA01	26,0	14,0	14,0	21,0	7,0
2366CA01	26,0	15,0	14,0	21,0	7,0
2367CA01	26,0	16,0	14,0	21,0	7,0
2368CA01	26,0	17,0	14,0	21,0	7,0
2369CA01	26,0	18,0	14,0	21,0	7,0

		TITLE <b>SOFT SPECIAL GROMMETS</b>	
		MATERIAL PVC HB (UL94)	DATE 12/05/2021
PART NUMBER SEE TABLE		DRAWING NUMBER 21.05.12.23XX.0.E	
DRAWN R.F.		COLOR BLACK	CHECK
SIZE A4	SCALE NTS	UNIT mm.	REV A
UNLESS OTHERWISE SPECIFIED TOLERANCE SEE ABOVE		APPROVED	