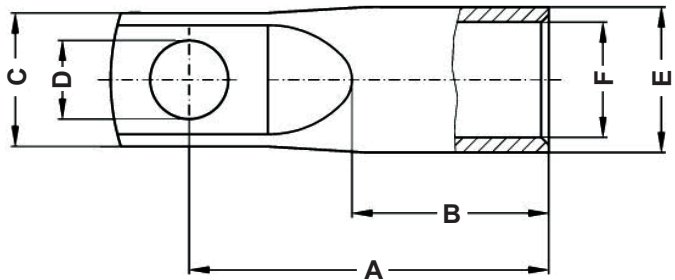


REVISIONS			
REV	DESCRIPTION	DATE	BY



P/N	A	B	C	D	E	F	Section mm <sup>2</sup>	Ø Hole
17187ZG91	32,5	16,0	15,0	6,4	11,3	8,3	35,0	6,0
17189ZG91	36,0	18,0	15,0	6,4	13,1	9,6	50,0	6,0
17188ZG91	39,0	18,0	18,5	10,5	13,1	9,6	50,0	10,0
17191ZG91	41,0	21,0	17,0	6,4	14,7	11,3	70,0	6,0
17190ZG91	42,5	21,0	19,0	10,5	14,7	11,3	70,0	10,0
17193ZG91	48,0	23,0	19,0	8,4	17,5	13,5	95,0	8,0
17192ZG91	50,0	23,0	19,0	10,5	17,5	13,5	95,0	10,0
17182ZG91	51,0	26,0	19,0	8,4	20,0	15,5	120,0	8,0
17181ZG91	53,5	26,0	19,0	10,5	20,0	15,5	120,0	10,0
17184ZG91	55,0	29,0	19,0	8,4	21,3	16,8	150,0	8,0
17183ZG91	57,0	29,0	19,0	10,5	21,3	16,8	150,0	10,0
17185ZG91	59,5	30,0	31,0	13,0	24,0	19,0	185,0	12,0
17186ZG91	69,0	35,0	31,5	13,0	27,3	21,1	240,0	12,0



**PIPE LUGS: 35 - 240 MM<sup>2</sup>  
WITH INSPECTION HOLE**

	DESCRIPTION		TITLE: TUBULAR CABLE LUGS WITH NARROW FLANGE, COPPER	DWG UNIT: MM
	MATERIAL: CU-ETP 99.9% TIN-PLATED COPPER		Modelled in RHINO 4.0	FILE: DwN: 10/05/21
			TOLLERANCES UNLESS NOTED	ChkD: DT: 21.05.10.171XX.0.E. Part Number: SEE TABLE
			SEE ABOVE	SHEET: 1 OF 1
				SCALE: NTS
REV.		DATE		

