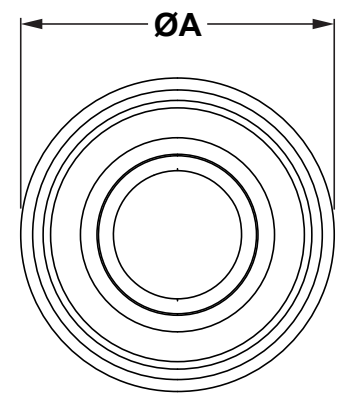
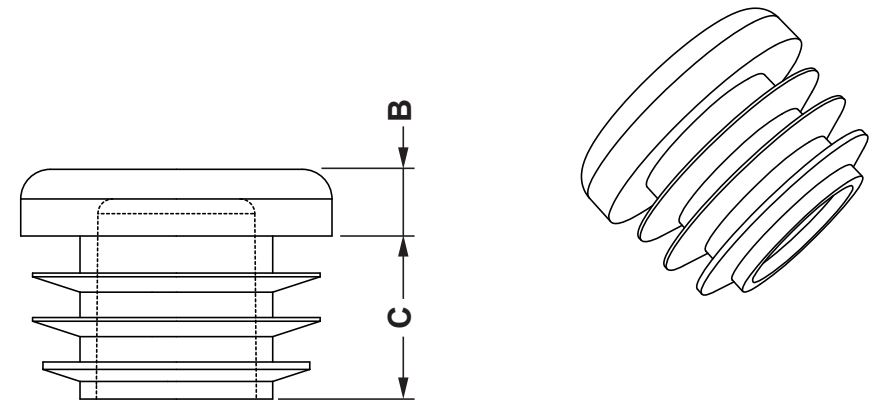


REVISIONS			
REV	DESCRIPTION	DATE	BY

CODICE	A	B	C	D
9300EA01	10,0	3,5	11,5	7,0 - 8,4
9301EA01	12,0	3,5	11,5	8,0 - 10,4
9302EA01	13,0	4,0	11,0	10,0 - 11,5
9303EA01	14,0	4,5	11,5	11,0 - 13,0
9304EA01	15,0	4,0	11,5	11,5 - 13,5
9305EA01	16,0	5,0	11,0	12,0 - 14,5
9306EA01	18,0	5,0	11,5	14,0 - 17,0
9307EA01	19,0	4,5	11,5	15,0 - 17,0
9308EA01	20,0	4,5	11,5	15,0 - 17,5
9309EA01	21,0	4,5	11,5	17,0 - 19,4
9310EA01	22,0	4,5	11,5	17,5 - 20,5
9311EA01	23,0	4,5	11,5	19,0 - 21,5
9312EA01	24,0	5,0	11,5	19,0 - 22,0
9313EA01	25,0	4,5	11,5	20,5 - 23,0
9314EA01	25,0	4,5	11,5	17,5 - 20,5
9315EA01	26,0	4,0	11,5	20,5 - 23,5
9316EA01	27,0	5,0	12,0	21,0 - 25,0
9317EA01	28,0	5,0	12,0	23,0 - 25,5
9318EA01	30,0	5,0	11,0	24,0 - 28,0
9319EA01	30,0	5,0	11,5	21,0 - 25,0
9320EA01	32,0	5,0	12,0	26,0 - 30,0
9321EA01	34,0	5,0	11,5	28,0 - 32,0
9322EA01	35,0	4,5	11,5	30,5 - 33,4
9323EA01	36,0	4,5	11,5	31,0 - 33,5
9324EA01	37,0	5,0	11,5	31,0 - 35,0
9325EA01	38,0	5,0	11,0	32,0 - 36,0
9326EA01	40,0	5,0	11,5	34,0 - 38,0
9327EA01	40,0	5,0	11,5	30,0 - 34,0

CODICE	A	B	C	D
9328EA01	40,0	4,5	11,5	34,0 - 36,0
9329EA01	42,0	4,5	11,5	38,5 - 40,5
9330EA01	42,0	5,0	11,5	37,0-40,4
9331EA01	42,0	5,0	11,5	32,0-36,0
9332EA01	45,0	5,0	11,5	41,0 - 42,5
9333EA01	48,0	5,0	18,0	43,0 - 45,5
9334EA01	50,0	4,5	10,0	46,0 - 48,0
9335EA01	50,0	5,0	11,5	41,0 - 45,0
9336EA01	50,0	5,0	11,5	37,0 - 41,0
9337EA01	52,0	5,0	14,5	45,0 - 49,0
9338EA01	55,0	5,0	11,5	49,0 - 53,0
9339EA01	60,0	5,0	18,0	54,0 - 57,0
9340EA01	60,0	5,0	16,5	50,0 - 54,0
9341EA01	65,0	5,0	21,0	58,0 - 62,0
9342EA01	70,0	5,0	21,0	61,0 - 66,0
9343EA01	75,0	5,0	21,5	68,0 - 73,0
9344EA01	76,0	5,0	21,5	68,1 - 72,9
9345EA01	80,0	5,0	21,0	74,0 - 77,0
9346EA01	85,0	6,0	21,0	78,0 - 82,0
9347EA01	89,0	6,0	21,0	80,9 - 85,3
9348EA01	90,0	5,0	21,0	82,0 - 87,0
9349EA01	90,0	5,0	20,0	80,0 - 85,0
9350EA01	100,0	6,0	28,0	91,0 - 96,0
9351EA01	108,0	6,0	28,0	98,0-104,2
9352EA01	110,0	6,0	28,0	101,0-106,0
9353EA01	125,0	6,0	34,0	113,0-121,0
9354EA01	150,0	6,0	34,0	136,0-146,0
9355EA01	160,0	6,0	34,0	146,0-155,0



D= pipe internal diameter

REV.	DESCRIPTION	DATE
	MATERIAL: LD-PE	
	COLOUR: BLACK	
	WORKING TEMPERATURE: -30°C ~ +60°C	
	NOTE: COLOUR CHROMED BY SPECIAL REQUEST	

TITLE: ROUND PIPE AND PLUGS		DWG UNIT: MM	
Modelled in RHINO 4.0		FILE:	DwN: 16/04/21
TOLLERANCES UNLESS NOTED	SHEET: 1 OF 1	DT: 21.04.16.XXXX.0.E.	ChkD: Part Number: SEE TABLE
SEE ABOVE	SCALE: NTS		