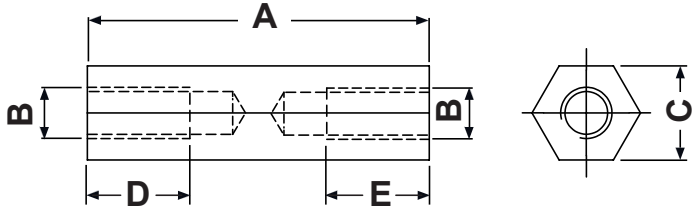


REVISIONS			
REV	DESCRIPTION	DATE	BY

P/N	A	B	C	D=E
7517MA92	5,0	M3	5,0	5,0
7519MA92	6,0	M3	5,0	6,0
7521MA92	7,0	M3	5,0	7,0
7522MA92	8,0	M3	5,0	8,0
7523MA92	9,0	M3	5,0	9,0
7500MA92	10,0	M3	5,0	10,0
7501MA92	11,0	M3	5,0	11,0
7502MA92	12,0	M3	5,0	12,0
7503MA92	13,0	M3	5,0	13,0
7504MA92	14,0	M3	5,0	14,0
7505MA92	15,0	M3	5,0	15,0
7506MA92	16,0	M3	5,0	7,0
7507MA92	17,0	M3	5,0	7,0
7508MA92	18,0	M3	5,0	7,0
7509MA92	20,0	M3	5,0	7,0
7510MA92	22,0	M3	5,0	7,0
12947MA92	24,0	M3	5,0	7,0
7511MA92	25,0	M3	5,0	7,0
7512MA92	30,0	M3	5,0	7,0
7513MA92	32,0	M3	5,0	7,0

P/N	A	B	C	D=E
7514MA92	35,0	M3	5,0	7,0
7515MA92	40,0	M3	5,0	7,0
7516MA92	45,0	M3	5,0	7,0
7518MA92	50,0	M3	5,0	7,0
7520MA92	60,0	M3	5,0	7,0
7534MA92	5,0	M4	6,0	5,0
7537MA92	8,0	M4	6,0	8,0
7524MA92	10,0	M4	6,0	10,0
7525MA92	12,0	M4	6,0	6,0
7526MA92	15,0	M4	6,0	6,0
7527MA92	18,0	M4	6,0	6,0
7528MA92	20,0	M4	6,0	6,0
7529MA92	25,0	M4	6,0	6,0
7530MA92	30,0	M4	6,0	6,0
7531MA92	35,0	M4	6,0	6,0
7532MA92	40,0	M4	6,0	6,0
7533MA92	45,0	M4	6,0	6,0
7535MA92	50,0	M4	6,0	6,0
7536MA92	60,0	M4	6,0	6,0



	DESCRIPTION	TITLE: BRASS F/F SPACERS	DWG UNIT: MM
MATERIAL:	BRASS NIKEL PLATED AVAILABLE IN GALVANIZED STEEL BY SPECIAL REQUEST	Modelled in RHINO 4.0	FILE:
		TOLLERANCES UNLESS NOTED	SHEET: 1 OF 1
		SEE ABOVE	SCALE: NTS
			DT: 21.04.15.XXXX.0.EI Part Number: SEE TABLE
REV.			

