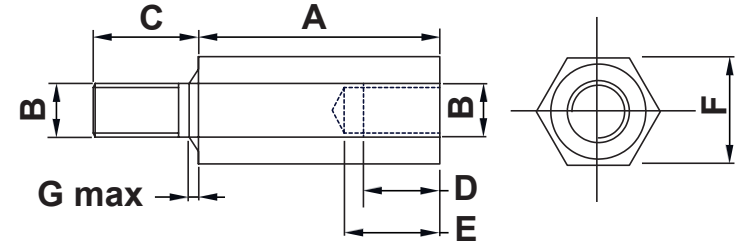


REVISIONS			
REV	DESCRIPTION	DATE	BY

P/N	A	B	C	D	E	F	G
7094MA92	5,0	M2	6,0	3,0	4,3	4,0	0,8
7095MA92	8,0	M2	6,0	4,0	6,5	4,0	0,8
7096MA92	10,0	M2	6,0	6,0	8,5	4,0	0,8
7097MA92	12,0	M2	6,0	8,0	10,0	4,0	0,8
7098MA92	15,0	M2	6,0	8,0	10,0	4,0	0,8
7099MA92	18,0	M2	6,0	8,0	13,0	4,0	0,8
7100MA92	20,0	M2	6,0	8,0	13,0	4,0	0,8
7101MA92	25,0	M2	6,0	8,0	13,0	4,0	0,8
7102MA92	30,0	M2	6,0	8,0	13,0	4,0	0,8
7103MA92	35,0	M2	6,0	8,0	13,0	4,0	0,8
7104MA92	40,0	M2	6,0	8,0	13,0	4,0	0,8
7105MA92	5,0	M2,5	6,0	3,0	4,3	5,0	0,9
7106MA92	8,0	M2,5	6,0	4,0	6,5	5,0	0,9
7107MA92	10,0	M2,5	6,0	6,0	8,5	5,0	0,9
7108MA92	12,0	M2,5	6,0	8,0	10,0	5,0	0,9
7109MA92	15,0	M2,5	6,0	8,0	13,0	5,0	0,9
7110MA92	18,0	M2,5	6,0	8,0	13,0	5,0	0,9
7111MA92	20,0	M2,5	6,0	8,0	13,0	5,0	0,9
7112MA92	25,0	M2,5	6,0	8,0	13,0	5,0	0,9
7113MA92	30,0	M2,5	6,0	8,0	13,0	5,0	0,9
7114MA92	35,0	M2,5	6,0	8,0	13,0	5,0	0,9
7115MA92	40,0	M2,5	6,0	8,0	13,0	5,0	0,9
4527MA92	5,0	M3	8,0	3,0	4,3	5,0	1,0
4690MA92	8,0	M3	8,0	4,0	6,5	5,0	1,0
4528MA92	10,0	M3	8,0	6,0	8,5	5,0	1,0
4691MA92	12,0	M3	8,0	8,0	13,0	5,0	1,0

P/N	A	B	C	D	E	F	G
4529MA92	15,0	M3	8,0	8,0	13,0	5,0	1,0
7116MA92	18,0	M3	8,0	8,0	13,0	5,0	1,0
4530MA92	20,0	M3	8,0	8,0	13,0	5,0	1,0
4531MA92	25,0	M3	10,0	10,0	15,0	5,0	1,0
4532MA92	30,0	M3	10,0	10,0	15,0	5,0	1,0
4533MA92	35,0	M3	10,0	10,0	15,0	5,0	1,0
4534MA92	40,0	M3	10,0	10,0	15,0	5,0	1,0
4535MA92	45,0	M3	10,0	10,0	15,0	5,0	1,0
4536MA92	50,0	M3	10,0	10,0	15,0	5,0	1,0
4537MA92	55,0	M3	10,0	10,0	15,0	5,0	1,0
4538MA92	60,0	M3	10,0	10,0	15,0	5,0	1,0
7117MA92	70,0	M3	10,0	10,0	15,0	5,0	1,0
7118MA92	80,0	M3	10,0	10,0	15,0	5,0	1,0
7119MA92	5,0	M3	8,0	3,0	4,3	5,5	1,0
7120MA92	8,0	M3	8,0	4,0	6,5	5,5	1,0
7121MA92	10,0	M3	8,0	6,0	8,5	5,5	1,0
7122MA92	12,0	M3	8,0	8,0	13,0	5,5	1,0
7123MA92	15,0	M3	8,0	8,0	13,0	5,5	1,0
7124MA92	18,0	M3	8,0	8,0	13,0	5,5	1,0
7125MA92	20,0	M3	8,0	8,0	13,0	5,5	1,0
7126MA92	25,0	M3	10,0	10,0	15,0	5,5	1,0
7127MA92	30,0	M3	10,0	10,0	15,0	5,5	1,0
7128MA92	35,0	M3	10,0	10,0	15,0	5,5	1,0
7129MA92	40,0	M3	10,0	10,0	15,0	5,5	1,0
7130MA92	50,0	M3	10,0	10,0	15,0	5,5	1,0
7131MA92	60,0	M3	10,0	10,0	15,0	5,5	1,0



DESCRIPTION		TITLE: NICKEL-PLATED BRASS THREADED P.C.B. SPACERS		DWG UNIT: MM	
MATERIAL: NIKEL-PLATED BRASS		Modelled in RHINO 4.0		FILE:	
Available in Galvanized steel by special request		TOLLERANCES UNLESS NOTED		DwN: 26/04/21	
		SEE ABOVE		ChkD:	
				DT: 21.04.26.XXXXX.0.E	
				SHEET: 1 OF 1	
				Part Number: SEE TABLE	
				SCALE: NTS	
REV.		DATE			