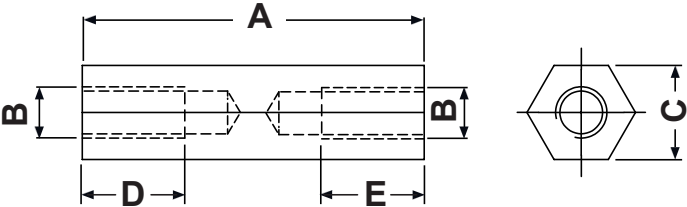




| REVISIONS | | | |
|-----------|-------------|------|----|
| REV | DESCRIPTION | DATE | BY |
| | | | |
| | | | |

| P/N | A | B | C | D=E |
|----------|------|------|-----|------|
| 7000MA92 | 5,0 | M2 | 4,0 | 5,0 |
| 7001MA92 | 8,0 | M2 | 4,0 | 8,0 |
| 7002MA92 | 10,0 | M2 | 4,0 | 10,0 |
| 7003MA92 | 12,0 | M2 | 4,0 | 12,0 |
| 7004MA92 | 15,0 | M2 | 4,0 | 15,0 |
| 7005MA92 | 18,0 | M2 | 4,0 | 18,0 |
| 7006MA92 | 20,0 | M2 | 4,0 | 20,0 |
| 7007MA92 | 25,0 | M2 | 4,0 | 8,0 |
| 7008MA92 | 30,0 | M2 | 4,0 | 8,0 |
| 7009MA92 | 35,0 | M2 | 4,0 | 8,0 |
| 7010MA92 | 40,0 | M2 | 4,0 | 8,0 |
| 7011MA92 | 5,0 | M2,5 | 5,0 | 5,0 |
| 7012MA92 | 8,0 | M2,5 | 5,0 | 8,0 |
| 7013MA92 | 10,0 | M2,5 | 5,0 | 10,0 |
| 7014MA92 | 12,0 | M2,5 | 5,0 | 12,0 |
| 7015MA92 | 15,0 | M2,5 | 5,0 | 15,0 |
| 7016MA92 | 18,0 | M2,5 | 5,0 | 18,0 |
| 7017MA92 | 20,0 | M2,5 | 5,0 | 20,0 |
| 7018MA92 | 25,0 | M2,5 | 5,0 | 8,0 |
| 7019MA92 | 30,0 | M2,5 | 5,0 | 8,0 |
| 7020MA92 | 35,0 | M2,5 | 5,0 | 8,0 |
| 7021MA92 | 40,0 | M2,5 | 5,0 | 8,0 |
| 7022MA92 | 5,0 | M3 | 5,0 | 5,0 |
| 7023MA92 | 8,0 | M3 | 5,0 | 8,0 |
| 7024MA92 | 10,0 | M3 | 5,0 | 10,0 |
| 7025MA92 | 12,0 | M3 | 5,0 | 12,0 |
| 7026MA92 | 15,0 | M3 | 5,0 | 15,0 |
| 7027MA92 | 18,0 | M3 | 5,0 | 18,0 |
| 7028MA92 | 20,0 | M3 | 5,0 | 20,0 |
| 7029MA92 | 25,0 | M3 | 5,0 | 10,0 |
| 7030MA92 | 30,0 | M3 | 5,0 | 10,0 |
| 7031MA92 | 35,0 | M3 | 5,0 | 10,0 |
| 7032MA92 | 40,0 | M3 | 5,0 | 10,0 |

| P/N | A | B | C | D=E |
|----------|------|----|-----|------|
| 8488MA92 | 45,0 | M3 | 5,0 | 10,0 |
| 7033MA92 | 50,0 | M3 | 5,0 | 10,0 |
| 8489MA92 | 55,0 | M3 | 5,0 | 10,0 |
| 7034MA92 | 60,0 | M3 | 5,0 | 10,0 |
| 7035MA92 | 70,0 | M3 | 5,0 | 10,0 |
| 7036MA92 | 80,0 | M3 | 5,0 | 10,0 |
| 7037MA92 | 5,0 | M3 | 5,5 | 5,0 |
| 7038MA92 | 8,0 | M3 | 5,5 | 8,0 |
| 7039MA92 | 10,0 | M3 | 5,5 | 10,0 |
| 7040MA92 | 12,0 | M3 | 5,5 | 12,0 |
| 7041MA92 | 15,0 | M3 | 5,5 | 15,0 |
| 7042MA92 | 18,0 | M3 | 5,5 | 18,0 |
| 7043MA92 | 20,0 | M3 | 5,5 | 20,0 |
| 7045MA92 | 25,0 | M3 | 5,5 | 10,0 |
| 7046MA92 | 30,0 | M3 | 5,5 | 10,0 |
| 7047MA92 | 35,0 | M3 | 5,5 | 10,0 |
| 7048MA92 | 40,0 | M3 | 5,5 | 10,0 |
| 7049MA92 | 50,0 | M3 | 5,5 | 10,0 |
| 7050MA92 | 60,0 | M3 | 5,5 | 10,0 |
| 7051MA92 | 70,0 | M3 | 5,5 | 10,0 |
| 7052MA92 | 80,0 | M3 | 5,5 | 10,0 |
| 4551MA92 | 5,0 | M3 | 6,0 | 5,0 |
| 7053MA92 | 8,0 | M3 | 6,0 | 8,0 |
| 4552MA92 | 10,0 | M3 | 6,0 | 10,0 |
| 7054MA92 | 12,0 | M3 | 6,0 | 12,0 |
| 4553MA92 | 15,0 | M3 | 6,0 | 15,0 |
| 7055MA92 | 18,0 | M3 | 6,0 | 18,0 |
| 4554MA92 | 20,0 | M3 | 6,0 | 20,0 |
| 4555MA92 | 25,0 | M3 | 6,0 | 9,0 |
| 4556MA92 | 30,0 | M3 | 6,0 | 9,0 |
| 4557MA92 | 35,0 | M3 | 6,0 | 9,0 |
| 4563MA92 | 5,0 | M4 | 7,0 | 5,0 |
| 7073MA92 | 8,0 | M4 | 7,0 | 8,0 |

| P/N | A | B | C | D=E |
|----------|------|----|-----|------|
| 4564MA92 | 10,0 | M4 | 7,0 | 10,0 |
| 7074MA92 | 12,0 | M4 | 7,0 | 12,0 |
| 4565MA92 | 15,0 | M4 | 7,0 | 15,0 |
| 7075MA92 | 18,0 | M4 | 7,0 | 18,0 |
| 4566MA92 | 20,0 | M4 | 7,0 | 20,0 |
| 4567MA92 | 25,0 | M4 | 7,0 | 10,0 |
| 4568MA92 | 30,0 | M4 | 7,0 | 10,0 |
| 4569MA92 | 35,0 | M4 | 7,0 | 10,0 |
| 4570MA92 | 40,0 | M4 | 7,0 | 10,0 |
| 4571MA92 | 45,0 | M4 | 7,0 | 10,0 |
| 4572MA92 | 50,0 | M4 | 7,0 | 10,0 |
| 4573MA92 | 55,0 | M4 | 7,0 | 10,0 |
| 4574MA92 | 60,0 | M4 | 7,0 | 10,0 |
| 7076MA92 | 70,0 | M4 | 7,0 | 10,0 |
| 7077MA92 | 80,0 | M4 | 7,0 | 10,0 |
| 7078MA92 | 5,0 | M5 | 8,0 | 5,0 |
| 7079MA92 | 8,0 | M5 | 8,0 | 8,0 |
| 7080MA92 | 10,0 | M5 | 8,0 | 10,0 |
| 7081MA92 | 12,0 | M5 | 8,0 | 12,0 |
| 7082MA92 | 15,0 | M5 | 8,0 | 15,0 |
| 7083MA92 | 18,0 | M5 | 8,0 | 18,0 |
| 7084MA92 | 20,0 | M5 | 8,0 | 20,0 |
| 7085MA92 | 25,0 | M5 | 8,0 | 10,0 |
| 7086MA92 | 30,0 | M5 | 8,0 | 10,0 |
| 7087MA92 | 35,0 | M5 | 8,0 | 10,0 |
| 7088MA92 | 40,0 | M5 | 8,0 | 10,0 |
| 7089MA92 | 45,0 | M5 | 8,0 | 10,0 |
| 7090MA92 | 50,0 | M5 | 8,0 | 10,0 |
| 7091MA92 | 60,0 | M5 | 8,0 | 10,0 |
| 7092MA92 | 70,0 | M5 | 8,0 | 10,0 |
| 7093MA92 | 80,0 | M5 | 8,0 | 10,0 |



| | | | | | | | | | |
|------|-------------|--------------------|------|---------------------------------|---------------|---|---|-----------------|-------|
| | DESCRIPTION | | | TITLE: BRASS F/F SPACERS | | |  | DWG UNIT: MM | |
| | MATERIAL: | BRASS NIKEL PLATED | | Modelled in RHINO 4.0 | | | FILE: | DwN: 15/04/21 | ChkD: |
| | | | | TOLLERANCES UNLESS NOTED | SHEET: 1 OF 1 | DT:21.04.15.XXXX.0.El | Part Number: SEE TABLE | | |
| | | | | SEE ABOVE | SCALE: NTS |  | | | |
| REV. | | | DATE | | | | | | |