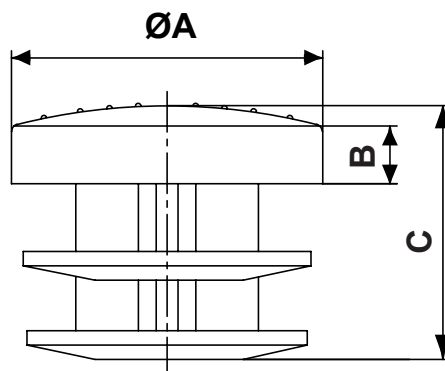



DIM.	TOL.
5mm DOWN	±0.2
5~20mm	±0.3
20~40mm	±0.4
40~60mm	±0.5
60~100mm	±0.8
100mm UP	±1.0

REVISIONS			
REV	DESCRIPTION	DATE	BY



P/N	A	B	C
3435EA01	10,0	5,0	13,0
3436EA01	12,0	5,0	14,0
3437EA01	14,0	5,0	14,0
3438EA01	16,0	5,0	16,0
3439EA01	18,0	5,0	13,0
3440EA01	20,0	5,0	13,0
3441EA01	22,0	5,0	13,0
3442EA01	24,0	5,0	20,0
3443EA01	25,0	5,0	19,0
3444EA01	26,0	5,0	20,0

P/N	A	B	C
3445EA01	28,0	5,0	19,0
3446EA01	30,0	5,0	19,0
3447EA01	32,0	5,0	19,0
3448EA01	35,0	5,0	20,0
3449EA01	38,0	5,0	22,0
3450EA01	40,0	5,0	22,0
3451EA01	45,0	5,0	30,0
3452EA01	50,0	5,0	22,0
3453EA01	60,0	5,0	24,0
3454EA01	80,0	5,0	33,0

 fastpoint		TITLE ROUND PLUGS	
		MATERIAL PE-LD	DATE 12/04/2021
PART NUMBER SEE TABLE			DRAWN R.F.
DRAWING NUMBER 21.04.12.34XX.0.E		COLOR BLACK	CHECK
SIZE A4	SCALE NTS	UNIT mm.	REV A
		UNLESS OTHERWISE SPECIFIED TOLERANCE SEE ABOVE	APPROVED