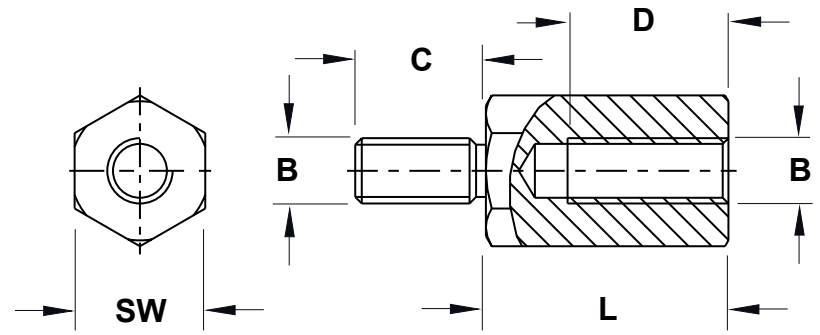


| ARTIKEL<br>P/N | SW      | B    | C    | D    | L   |
|----------------|---------|------|------|------|---|
| 10780 MA92     | SW 4.0  | M2   | 5,0  | 3,0  | 5.0 / 6.0   |
|                | SW 4.0  | M2   | 5,0  | 5,0  | 8.0 / 10.0  |
|                | SW 4.0  | M2   | 6,0  | 3,0  | 12.0 / 15.0 / 18.0 / 20.0 / 25.0 / 30.0 / 35.0 / 40.0 / 45.0 / 50.0   |
| 10781 MA92     | SW 4.0  | M2.5 | 6,0  | 3,0  | 5.0 / 6.0   |
|                | SW 4.0  | M2.5 | 6,0  | 5,0  | 8.0 / 10.0  |
|                | SW 4.0  | M2.5 | 6,0  | 7,0  | 12.0 / 15.0 / 18.0 / 20.0 / 25.0 / 30.0 / 35.0 / 40.0 / 45.0 / 50.0   |
| 10782 MA92     | SW 5.0  | M2.5 | 6,0  | 3,0  | 5.0 / 6.0   |
|                | SW 5.0  | M2.5 | 6,0  | 6,0  | 8.0 / 10.0 / 12.0   |
|                | SW 5.0  | M2.5 | 6,0  | 10,0 | 15.0 / 18.0 / 20.0 / 25.0 / 30.0 / 35.0 / 40.0 / 45.0 / 50.0 / 55.0 / 60.0  |
| 10783 MA92     | SW 5.0  | M3   | 8,0  | 3,0  | 5.0 / 6.0   |
|                | SW 5.0  | M3   | 8,0  | 6,0  | 8.0 / 10.0 / 12.0   |
|                | SW 5.0  | M3   | 8,0  | 10,0 | 15.0 / 18.0 / 20.0 / 25.0 / 30.0 / 35.0 / 40.0 / 45.0 / 50.0 / 55.0 / 60.0  |
| 10784 MA92     | SW 5.5  | M3   | 8,0  | 3,0  | 5.0 / 6.0 / 7.0   |
|                | SW 5.5  | M3   | 8,0  | 6,0  | 8.0 / 9.0 / 10.0 / 11.0 / 12.0  |
|                | SW 5.5  | M3   | 8,0  | 8,0  | 13.0 / 14.0   |
|                | SW 5.5  | M3   | 8,0  | 10,0 | 15.0 / 18.0 / 20.0 / 25.0 / 30.0 / 35.0 / 40.0 / 45.0 / 50.0 / 55.0 / 60.0  |
| 10785 MA92     | SW 6.0  | M3   | 8,0  | 3,0  | 5.0 / 6.0   |
|                | SW 6.0  | M3   | 8,0  | 6,0  | 8.0 / 10.0 / 12.0   |
|                | SW 6.0  | M3   | 8,0  | 10,0 | 15.0 / 18.0 / 20.0 / 25.0 / 30.0 / 35.0 / 40.0 / 45.0 / 50.0 / 55.0 / 60.0  |
| 10786 MA92     | SW 7.0  | M4   | 8,0  | 3,0  | 5.0 / 6.0 / 7.0 / 8.0   |
|                | SW 7.0  | M4   | 8,0  | 6,0  | 9.0 / 10.0 / 11.0 / 12.0  |
|                | SW 7.0  | M4   | 8,0  | 8,0  | 13.0 / 14.0 / 15.0 / 16.0 / 17.0 / 18.0 / 19.0  |
|                | SW 7.0  | M4   | 8,0  | 10,0 | 20.0 / 21.0 / 22.0 / 23.0 / 24.0 / 25.0 / 30.0 / 35.0 / 40.0 / 45.0 / 50.0 / 55.0 / 60.0 / 65.0 / 70.0 / 75.0 / 80.0 / 85.0 / 90.0 / 95.0 |
| 10787 MA92     | SW 8.0  | M5   | 8,0  | 6,0  | 8.0 / 10.0 / 12.0   |
|                | SW 8.0  | M5   | 8,0  | 10,0 | 15.0 / 18.0 / 20.0 / 25.0 / 30.0 / 45.0 / 50.0 / 55.0 / 60.0  |
| 10788 MA92     | SW 10.0 | M6   | 10,0 | 6,0  | 10.0 / 12.0   |
|                | SW 10.0 | M6   | 10,0 | 10,0 | 15.0 / 18.0   |
|                | SW 10.0 | M6   | 10,0 | 12,0 | 20.0 / 25.0 / 30.0 / 35.0 / 40.0 / 45.0 / 50.0 / 55.0 / 60.0  |

| Gewindebolzen Messing / Threaded Spacer Brass |             |                       |           | 10780 - 10788 |        |        |
|---|-------------|-----------------------|-----------|---------------|--------|--------|
| Konstruiert von                               | Geprüft von | Genehmigt von - Datum | Dateiname | Datum         | Rev 00 |        |
|   |             |                       |           | 14.08.2015    |        |        |
| Änderungen                                    |             |                       |           | Datum         | Rev    | Bearb. |
|   |             |                       |           |               |        |        |



Bestellhinweis / Order Information:  
Bei der Bestellung des Artikels, bitte die gewünschte Länge am Ende der Artikelbezeichnung hinzufügen  
By order pls add the length of the requested Part at the end of the Part No.  
Beispiel / Example  
10780MA9408.00 für eine Abstandshalter mit einer Länge von 8,0mm Länge  
10780MA9408.00 for a Spacer with a length of 8.0mm

Längenabstufungen : 1,0mm Zwischenlängen auf Anfrage  
Increments : 1,0mm special length of special request

|      |   |                             |   |                                     |
|------|---|-----------------------------|---|-------------------------------------|
| REV. | DESCRIPTION   |                             | TITLE: Gewindebolzen Messing/ Threaded Spacer brass | DWG UNIT: MM                        |
|      | MATERIAL:<br>Messing / Brass : 2.0421 / DMS 100<br>Oberfläche / surface : Nickel plated A3F |                             | Modelled in RHINO 4.0                               | FILE:                               |
|      |   | TOLERANCES<br>DIN ISO2768 m | SHEET: 1 OF 1                                       | DwN:                                |
|      |   |                             | SCALE:<br>NTS                                       | DT:                                 |
|      |   |                             |   | ChkD:<br>Part Number: 10780 - 10788 |
|      |   |                             |   |                                     |
|      |   | DATE                        |   |                                     |