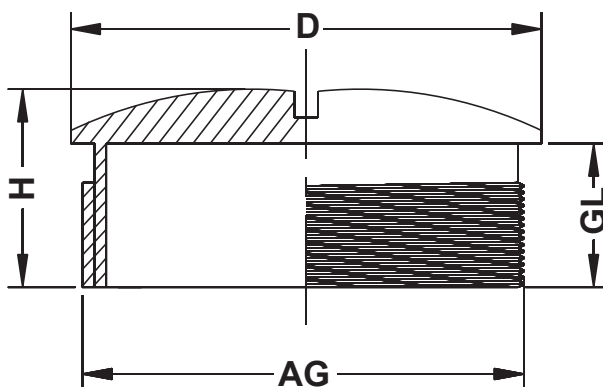


DIM.	TOL.
5mm DOWN	±0.2
5~20mm	±0.3
20~40mm	±0.4
40~60mm	±0.5
60~100mm	±0.8
100mm UP	±1.0

REVISIONS			
REV	DESCRIPTION	DATE	BY



P/N RAL7001	P/N RAL7035	P/N RAL9005	AG thread	H	GL	D
24048AA117001	24048AA117035	24048AA019005	M12 x 1,5	8,5	6,0	15,0
24049AA117001	24049AA117035	24049AA019005	M16 x 1,5	10,0	7,0	20,0
24050AA117001	24050AA117035	24050AA019005	M20 x 1,5	10,0	7,0	24,0
24051AA117001	24051AA117035	24051AA019005	M25 x 1,5	14,0	10,0	30,0
24052AA117001	24052AA117035	24052AA019005	M32 x 1,5	14,0	10,0	37,0
24053AA117001	24053AA117035	24053AA019005	M40 x 1,5	15,0	10,0	48,0

NOTES:

MATERIAL:

SCREW PLUG: PA 6 V2(UL94)
SEALING RING: NBR (on request)

CONNECTION THREAD:


METRIC: EN 60423

PROTECTION CLASS:

IP54

WORKING TEMPERATURE:

-20 °C + 100 °C
-30 °C + 150 °C (SHORT TERM)

				TITLE BLIND STOPS	
				MATERIAL SEE ABOVE	
PART NUMBER SEE TABLE				DRAWN R.F.	
DRAWING NUMBER 19.04.03.240XX.0.E				CHECK	
SIZE A4				UNLESS OTHERWISE SPECIFIED TOLERANCE SEE ABOVE	
SCALE NTS		UNIT mm.		APPROVED	
REV A					