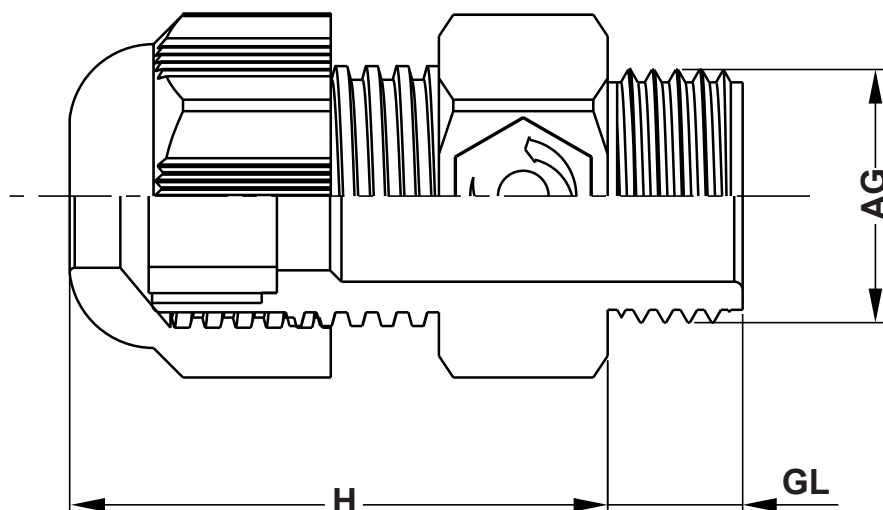


REVISIONS			
REV	DESCRIPTION	DATE	BY



P/N RAL 7035	P/N RAL 9005	AG	H	GL	mm	CABLEØ	HOLEØ	AVERAGE AIR FLOW l/h	WATER INTRUSION mbar
13250AA117035	13250AA019005	M12x1,5	29,0	8,0	19,0	4,0 - 6,5	12,3	70,0	0,1
13251AA117035	13251AA019005	M16x1,5	33,0	8,0	19,0	4,0 - 8,0	16,3	70,0	0,1
13252AA117035	13252AA019005	M16x1,5	34,0	10,0	22,0	5,0 - 10,0	16,3	70,0	0,1
13253AA117035	13253AA019005	M20x1,5	40,5	10,0	24,0	4,0 - 9,0	20,3	70,0	0,1
13254AA117035	13254AA019005	M20x1,5	40,5	10,0	24,0	6,0 - 12,0	20,3	70,0	0,1

### MATERIAL

Cap nut : Polyamide PA6 V2  
 Sealing ring : TPV  
 Gland body : Polyamide PA6 V2  
 O-ring : NBR / EPDM  
 Vent Part : Acrylic Co-Polymer on Nylon Support  
 (Hydrophobic-Oleophobic)  
 Connection thread : Metric (EN 60423)  
 Protection class : IP68  
 Temperature range : -20 °C +100 °C -30 +150 °C (short term)

				TITLE <b>PLASTIC VENTILATION GLANDS</b>			
				MATERIAL SEE ABOVE		DATE 06/05/2019	
				COLOR SEE ABOVE		DRAWN R.F.	
PART NUMBER SEE TABLE		DRAWING NUMBER 19.05.06.1325X.0.E		CHECK			
SIZE A4	SCALE NTS	UNIT mm.	REV A	UNLESS OTHERWISE SPECIFIED TOLERANCE		APPROVED	