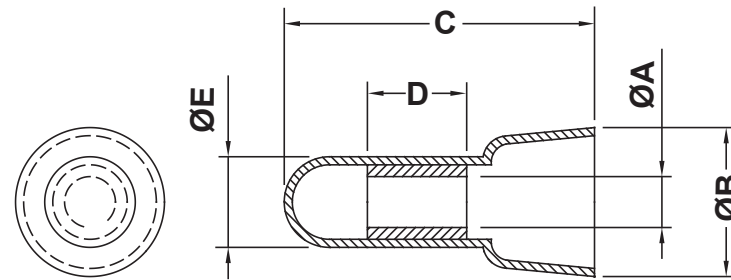


DIM.	TOL.
5mm DOWN	±0.2
5~20mm	±0.3
20~40mm	±0.4
40~60mm	±0.5
60~100mm	±0.8
100mm UP	±1.0



TYPE	P/N	Temp Rating	Voltage	Suitable Wire A.W.G.	A	B	C	D	E
NEW	5304AA00HS	105°C	300V	22 - 10	4,4	10,3	24,0	7,8	7,0

DESCRIPTION		TITLE: CLOSE-END CONNECTOR		DWG UNIT: MM	
MATERIAL: PA66 V2(UL94)		Modelled in RHINO 4.0		FILE:	DwN: 20.06.09.5304.E.0
COLOUR: NATURAL		TOLLERANCES	SHEET: 1 OF 1	DT: 09/06/20	ChkD: Part Number: SEE TABLE
		SEE ABOVE	SCALE: NTS		
REV.	DATE				