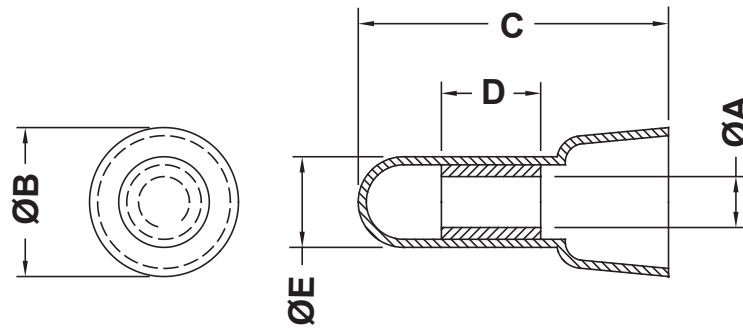


DIM.	TOL.
5mm DOWN	±0.2
5~20mm	±0.3
20~40mm	±0.4
40~60mm	±0.5
60~100mm	±0.8
100mm UP	±1.0



Temp Rating	Voltage	Suitable Wire A.W.G.	Suitable Wire mm ²	Dimension				
				A mm	B mm	C mm	D mm	E mm
105°C	300V	22-16	0,5-1,5	2,5	9,3	19,3	7,0	5,1

DESCRIPTION		TITLE: CLOSE-END CONNECTOR		DWG UNIT: MM	
MATERIAL:	PA66 V2(UL94)	Modelled in RHINO 4.0		FILE:	DwN: 09.05.11.5302.E.0
COLOUR:	NATURAL	TOLLERANCES UNLESS NOTED		SHEET: 1 OF 1	ChkD: DT: 11/05/09
REV.	DATE	SEE ABOVE		SCALE: NTS	Part Number: 5302AA00HS