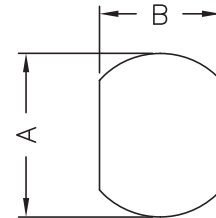
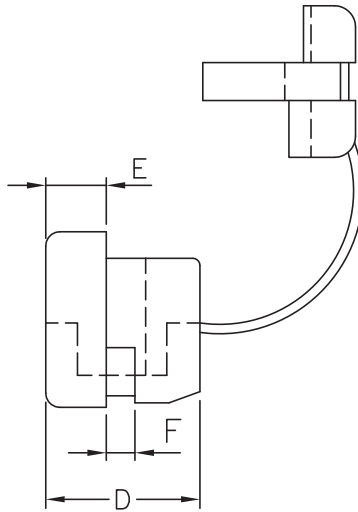
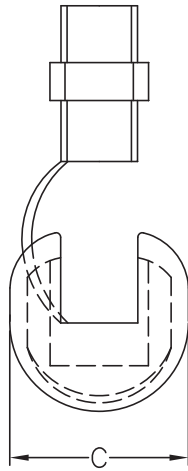
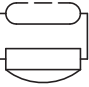
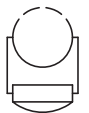



DIM.	TOL
5mm DOWN	±0.2
5~20mm	±0.3
20~40mm	±0.4
40~60mm	±0.5
60~100mm	±0.8
100mm UP	±1.0

REVISIONS			
REV	DESCRIPTION	DATE	BY



MOUNTING HOLE

PART NO.	Cord Type	Size(AWG)of Conductor	Size	CHASSIS DIMENSION		CHASSIS THICKNESS MAX	DIMENSION			CROSS SECTION SHAPE
				A	B		F	C	D	
10866AA01	SPT-1	18/2C	3X5.6	9.5	8.7	1.6	10.4	10.4	4.0	FLAT TYPE 
10867AA01	SPT-1	18/2C	3X5.6	11.0	9.9	1.6	11.5	10.4	4.0	
10868AA01	SPT-1	18/2C	3X5.6	11.0	9.9	2.5	11.5	10.4	4.0	
10869AA01	SPT-2	18/2C	3.7	12.7	11.8	1.6	13.3	10.4	4.0	
		16/2C	3.8X7.6	13.1						
10863AA01	SPT-3	18/2C	3.7	14.3	13.4	1.6	15.5	15.4	6.2	
10864AA01	SPT-3	18/2C	3.8X7.6	14.3	13.4	3.2	15.5	15.4	6.2	
10850AA01	SJT	18/3C	Ø7,6	12.7	11.5	1.6	13.4	10.9	4.2	ROUND TYPE 
		16/3C	Ø8,2 - 9,2	13.1						
10853AA01	SVT	18/3C	Ø6,4 - 7,4	12.7	11.5	1.6	13.5	10.9	4.2	
				13.1						
10854AA01	SVT	18/3C	Ø6,4 - 7,4	12.7	11.5	2.5	13.5	10.9	4.2	
				13.1						
7592AA01	SJT	18/3C	Ø7,6	15.9	14.0	1.6	16.8	14.8	5.6	
10855AA01	SJT	18/3C	Ø7,6	15.9	14.0	3.2	16.8	14.8	5.6	
10856AA01	SJT	16/3C	Ø8,2 - 9,2	15.9	14.0	1.6	16.2	15.0	5.6	
10857AA01	SJT	16/3C	Ø8,2 - 9,2	15.9	14.0	3.2	16.2	14.8	5.7	
10858AA01	SJT	14/3C	Ø9,2 - 10,5	19.0	16.5	1.6	19.5	19.1	7.8	
			Ø11,0	19.8						
10859AA01	SJT	14/3C	Ø9,2 - 10,5	19.0	16.5	3.2	19.5	19.4	7.8	
			Ø11,0	19.8						

				TITLE CABLE CLAMP			
				MATERIAL PA66 V2(UL94)		DATE 17/05/2011	
PART NUMBER SEE TABLE		DRAWING NUMBER 11.05.17.108XX.0.E		DRAWN R.F.			
SIZE A4		SCALE NTS		CHECK			
UNIT mm.		REV A		COLOR BLACK			
UNLESS OTHERWISE SPECIFIED TOLERANCE SEE ABOVE				APPROVED			