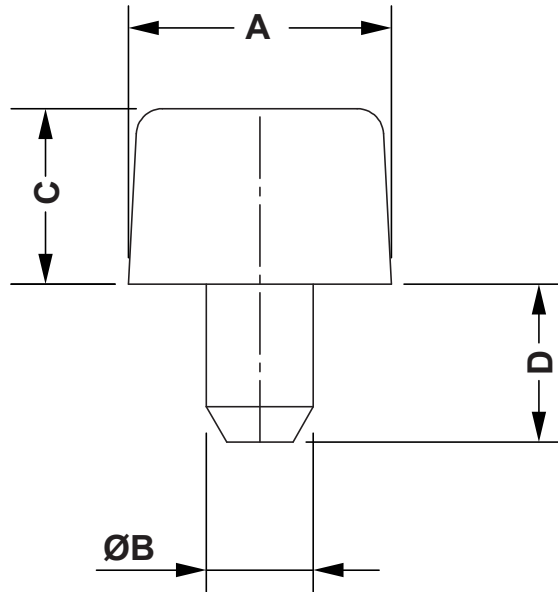


DIM.	TOL.
5mm DOWN	±0.2
5~20mm	±0.3
20~40mm	±0.4
40~60mm	±0.5
60~100mm	±0.8
100mm UP	±1.0

REVISIONS			
REV	DESCRIPTION	DATE	BY



P/N	A	B	C	D	MATERIAL
0433CA01	15,0x10,0	6,0	10,0	9,0	SOFT PVC
0433EA01	15,0x10,0	6,0	10,0	9,0	PE-LD
0437CA01	7,0	3,5	1,5	5,0	SOFT PVC
0437EA01	7,0	3,5	1,5	5,0	PE-LD
0435CA01	12,0	6,0	2,5	9,0	SOFT PVC
0435EA01	12,0	6,0	2,5	9,0	PE-LD
0436CA01	12,0	6,0	3,8	9,0	SOFT PVC
0436EA01	12,0	6,0	3,8	9,0	PE-LD
0434EA01	16,0	6,0	11,0	12,0	PE-LD
3597EA01	5,0	3,0	4,0	4,0	PE-LD

REV.	DESCRIPTION	DATE	TITLE: FEETS & PUSH-IN BUMPERS	DWG UNIT: MM
	MATERIAL: SEE TABLE		Modelled in RHINO 4.0 FILE:	DwN: 18/07/18
	COLOUR: BLACK		TOLLERANCES UNLESS NOTED	ChkD:
			SEE ABOVE	DT: 18.07.18.XXXX.E.0 Part Number: SEE TABLE
			SCALE: NTS	

