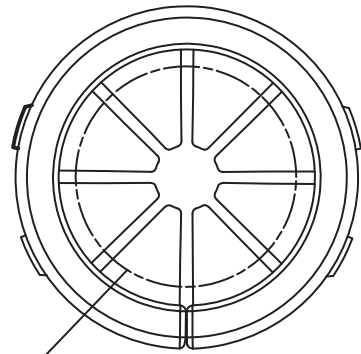
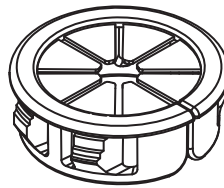


DIM.	TOL
L ≤ 10	±0.2
10 < L ≤ 30	±0.3
30 < L ≤ 50	±0.5
50 < L ≤ 100	±0.7
100 < L ≤ 250	±1.2
ABOVE 250	±1.5

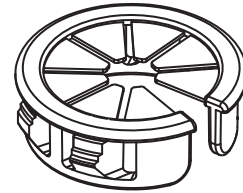
REVISIONS			
REV	DESCRIPTION	DATE	BY



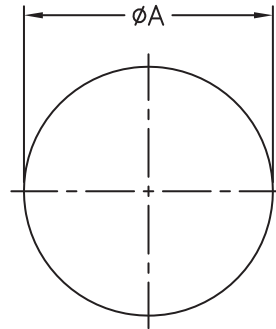
For Largest Assembled Cable Diameter : G^{Max.}



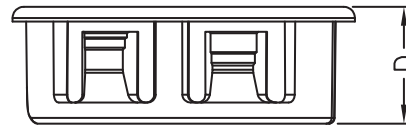
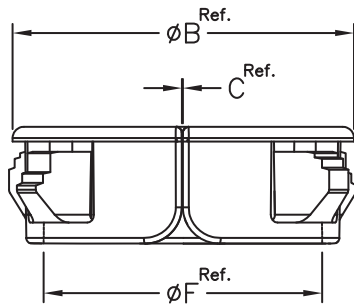
CLOSE



OPEN



MOUNTING HOLE : ϕA
CHASSIS THICKNESS : E



NOTE: All measurement does not include gate which raises under 0.3mm.

PART NO.	DIMENSION						
	A	B	C	D	E	F	G
10710AA01	12.7	14.7	1.0	9.8	0.8~3.3	10.1	5
10711AA01	15.9	17.9	0.7	10.3		13.1	8.5
10712AA01	22.2	24.2	0.5			19.2	11.5
10713AA01	27.8	29.8	0.5			24.6	16
10714AA01	31.8	36.6	0.5			28.3	19
10715AA01	34.9	36.9	0.4			31.1	20
10716AA01	38.1	39.8	0.3			10.7	34.1



TITLE PUSH MOUNT TWIST LOCK			
MATERIAL PA66 V2 UL94		DATE 17/05/2011	
		DRAWN J.D.	
COLOR BLACK		CHECK	
UNLESS OTHERWISE SPECIFIED TOLERANCE SEE ABOVE		APPROVED	

PART NUMBER SEE TABLE		DRAWING NUMBER 11.05.17.10710.0.E	
SIZE A4	SCALE NTS	UNIT mm.	REV A