

TAPPI A LAMELLE ROTONDI



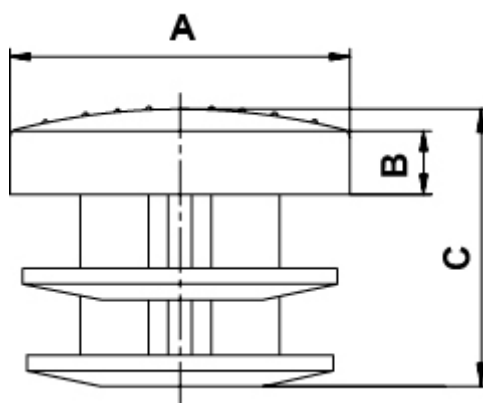
Descrizione tecnica

Materiale: Polietilene LD-PE

Colore: nero

Temperatura d'esercizio: -30°C ~ +70°C

Tutte le quote sono in mm



Codice	A	B	C	Type	Conf./pezzi
3435EA01	10,0	5,0	13,0	3	1.000
3436EA01	12,0	5,0	14,0	3	1.000
3437EA01	14,0	5,0	14,0	3	1.000
3438EA01	16,0	5,0	16,0	3	1.000
3439EA01	18,0	5,0	13,0	3	1.000
3440EA01	20,0	5,0	13,0	3	1.000
3441EA01	22,0	5,0	13,0	3	1.000
3442EA01	24,0	5,0	20,0	3	1.000
3443EA01	25,0	5,0	19,0	3	1.000

Codice	A	B	C	Type	Conf./pezzi
3444EA01	26,0	5,0	20,0	3	1.000
3445EA01	28,0	5,0	19,0	3	1.000
3446EA01	30,0	5,0	19,0	3	1.000
3447EA01	32,0	5,0	19,0	3	1.000
3448EA01	35,0	5,0	20,0	3	1.000
3449EA01	38,0	5,0	22,0	3	1.000
3450EA01	40,0	5,0	22,0	3	1.000
3451EA01	45,0	5,0	30,0	3	1.000
3452EA01	50,0	5,0	22,0	3	1.000
3453EA01	60,0	5,0	24,0	3	1.000
3454EA01	80,0	5,0	33,0	3	1.000