

## TAPPI A LAMELLE QUADRATI



### Descrizione tecnica

Materiale: PE-LD

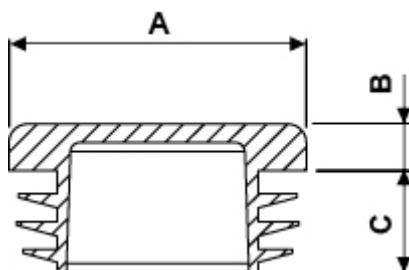
Colore: Nero

Autoestinguenza: V2 (UL94)

Temperatura d'esercizio: -30°C ~ +70°C

D: spessore tubo

Tutte le quote sono in mm



Codice	A	B	C	D	Conf./pezzi
9500EA01	10,0 x 10,0	4,0	11,5	1,2 - 2,5	1.000
9501EA01	12,0 x 12,0	4,0	11,5	1,0 - 2,0	1.000
9502EA01	1,0 - 2,0				
9503EA01	1,0 - 2,0				
9504EA01	1,0 - 2,5				
9505EA01	1,5 - 3,0				
9506EA01	1,0 - 2,2				
9507EA01	1,0 - 3,5				
9508EA01	1,2 - 2,2				

Codice	A	B	C	D	Conf./pezzi
9509EA01	2,0 - 3,0				
9510EA01	1,2 - 2,2				
9511EA01	2,5 - 4,5				
9512EA01	1,5 - 3,5				
9513EA01	1,0 - 2,5				
9514EA01	3,0 - 5,0				
9515EA01	1,5 - 2,5				
9516EA01	3,0 - 5,0				
9517EA01	1,0 - 3,0				
9518EA01	1,5 - 3,0				
9519EA01	2,6 - 4,9				
9520EA01	2,6 - 5,0				
9521EA01	3,0 - 5,0				
9522EA01	Nuevos productos				
9523EA01	1,5 - 3,5				
9524EA01	2,6 - 4,0				
9525EA01	5,0				
9526EA01	2,0 - 4,0				
9527EA01	Nuevos productos				
9528EA01	5,0				
9529EA01	2,0 - 4,0				
9530EA01	2,9 - 5,0				
9531EA01	3,0 - 5,0				
9532EA01	1,0 - 4,0				
9533EA01	3,0 - 6,0				