

## PASSACAVI SPECIALI



### Descrizione tecnica

**Materiale:** PVC

**Colore:** nero

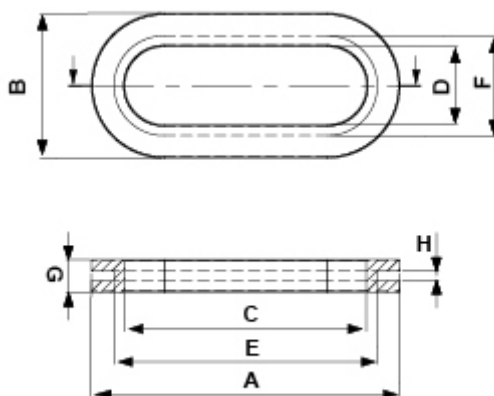
**Autoestinguenza:** HB (UL94)

**Temperatura esercizio:**

**-PVC:** -25°C ~ +60°C

**-TPE:** -28°C ~ +90°C solo su richiesta

Tutte le quote sono in mm.



Codice	A	B	C	D	E	F	G	H	Conf./pezzi
2425CA01	35,0	14,0	31,0	10,0	34,0	13,0	5,0	1,0	1.000
2426CA01	69,0	32,0	55,0	18,0	59,0	22,0	7,0	2,0	1.000
2427CA01	74,0	32,0	62,0	20,0	66,0	25,0	7,0	2,0	1.000
2427CA01M	74,0	32,0	62,0	20,0	66,0	25,0	7,0	2,0	500
2428CA01	77,0	33,0	63,0	19,0	69,0	25,0	7,0	2,0	1.000