

PASSACAVI IN PVC ALTI SPESSORI



Descrizione tecnica

Materiale: PVC

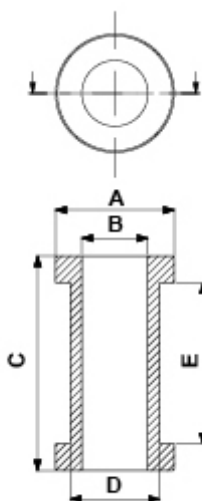
Colore: nero

Temperatura esercizio:

-PVC: -25°C ~ +60°C

-TPE: -28°C ~ +90°C nur su richiesta

Tutte le quote sono in mm.



| Codice | A | B | C | D | E | Conf./pezzi |
|----------|------|-----|------|------|------|-------------|
| 1270CA01 | 15,0 | 8,0 | 12,0 | 10,0 | 6,0 | 1.000 |
| 1271CA01 | 13,5 | 4,0 | 25,0 | 10,0 | 19,0 | 1.000 |
| 1272CA01 | 13,5 | 5,0 | 25,0 | 10,0 | 19,0 | 1.000 |
| 1273CA01 | 13,5 | 6,0 | 25,0 | 10,0 | 19,0 | 1.000 |
| 1274CA01 | 13,5 | 7,0 | 25,0 | 10,0 | 19,0 | 1.000 |
| 1275CA01 | 13,5 | 8,0 | 25,0 | 10,0 | 19,0 | 1.000 |

| Codice | A | B | C | D | E | Conf./pezzi |
|----------|------|------|------|------|------|-------------|
| 4687CA01 | 15,0 | 6,0 | 12,0 | 10,0 | 6,0 | 1.000 |
| 1278CA01 | 14,0 | 6,0 | 15,0 | 11,0 | 9,0 | 1.000 |
| 1280CA01 | 14,0 | 7,0 | 15,0 | 11,0 | 9,0 | 1.000 |
| 1282CA01 | 14,0 | 8,0 | 15,0 | 11,0 | 9,0 | 1.000 |
| 2362CA01 | 17,5 | 10,0 | 13,5 | 11,5 | 8,0 | 1.000 |
| 1288CA01 | 20,0 | 9,0 | 10,0 | 13,0 | 5,0 | 1.000 |
| 1284CA01 | 16,0 | 4,0 | 13,0 | 13,0 | 7,0 | 1.000 |
| 1283CA01 | 16,0 | 2,0 | 13,0 | 13,0 | 7,0 | 1.000 |
| 5062CA01 | 16,0 | 6,0 | 13,0 | 13,0 | 7,0 | 1.000 |
| 5064CA01 | 16,0 | 10,0 | 13,0 | 13,0 | 7,0 | 1.000 |
| 5063CA01 | 16,0 | 8,0 | 13,0 | 13,0 | 7,0 | 1.000 |
| 2380CA01 | 16,0 | 11,0 | 14,0 | 13,5 | 10,0 | 1.000 |
| 2379CA01 | 16,0 | 10,0 | 14,0 | 13,5 | 10,0 | 1.000 |
| 2374CA01 | 16,0 | 5,0 | 14,0 | 13,5 | 10,0 | 1.000 |
| 2375CA01 | 16,0 | 6,0 | 14,0 | 13,5 | 10,0 | 1.000 |
| 2376CA01 | 16,0 | 7,0 | 14,0 | 13,5 | 10,0 | 1.000 |
| 2377CA01 | 16,0 | 8,0 | 14,0 | 13,5 | 10,0 | 1.000 |
| 2378CA01 | 16,0 | 9,0 | 14,0 | 13,5 | 10,0 | 1.000 |
| 2354CA01 | 21,0 | 11,0 | 10,0 | 15,0 | 5,0 | 1.000 |
| 2355CA01 | 21,0 | 12,0 | 10,0 | 15,0 | 5,0 | 1.000 |
| 2353CA01 | 21,0 | 10,0 | 10,0 | 15,0 | 5,0 | 1.000 |
| 2352CA01 | 21,0 | 9,0 | 10,0 | 15,0 | 5,0 | 1.000 |
| 2351CA01 | 21,0 | 8,0 | 10,0 | 15,0 | 5,0 | 1.000 |
| 2350CA01 | 21,0 | 7,0 | 10,0 | 15,0 | 5,0 | 1.000 |
| 2349CA01 | 21,0 | 6,0 | 10,0 | 15,0 | 5,0 | 1.000 |
| 2368CA01 | 26,0 | 17,0 | 14,0 | 21,0 | 7,0 | 1.000 |
| 2369CA01 | 26,0 | 18,0 | 14,0 | 21,0 | 7,0 | 1.000 |
| 2367CA01 | 26,0 | 16,0 | 14,0 | 21,0 | 7,0 | 1.000 |
| 2366CA01 | 26,0 | 15,0 | 14,0 | 21,0 | 7,0 | 1.000 |
| 2365CA01 | 26,0 | 14,0 | 14,0 | 21,0 | 7,0 | 1.000 |
| 2364CA01 | 26,0 | 13,0 | 14,0 | 21,0 | 7,0 | 1.000 |

| Codice | A | B | C | D | E | Conf./pezzi |
|----------|------|------|------|------|-----|-------------|
| 2363CA01 | 26,0 | 12,0 | 14,0 | 21,0 | 7,0 | 1.000 |