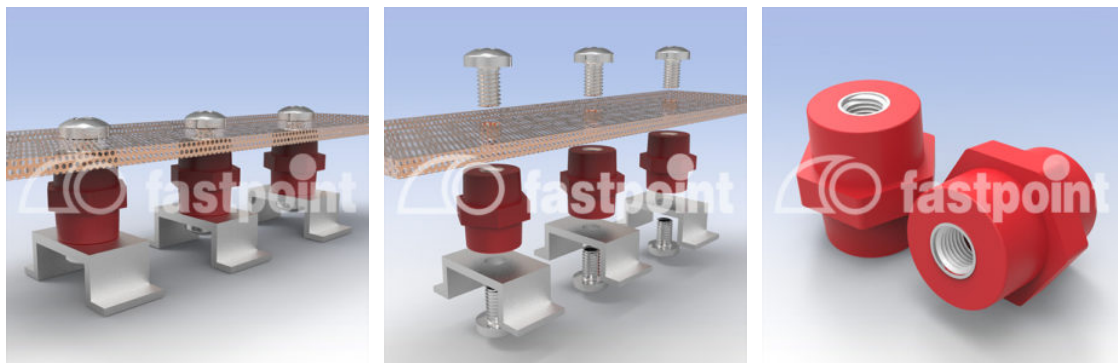


ISOLATORI ELETTRICI



Descrizione tecnica

Materiale:

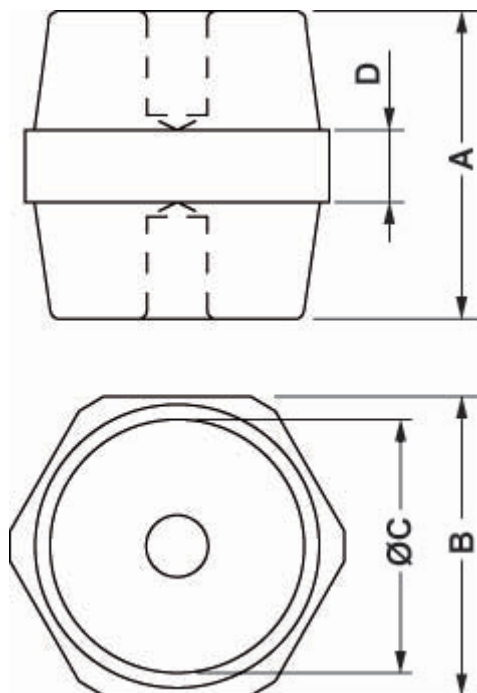
- Inserto filettato: Acciaio con rivestimento zincato
- DMC (Composto per stampaggio pasta)
- SMC (Composto per stampaggio lamiera)

Colore: Rosso

Temperatura d'esercizio: 40°C ~ +140°C

Autoestinguenza: V0 (UL94)

Tutte le quote sono in mm



| Codice | Passo | A | B | C | D | Conf./pezzi |
|-----------|-------|------|------|--------|-----|-------------|
| 17953PT04 | M8 | 25,0 | 22,0 | Ø 18,0 | 6,0 | 600 |

| Codice | Passo | A | B | C | D | Conf./pezzi |
|-----------|-------|------|------|------|------|-------------|
| 22780PT04 | M4 | 16,0 | 15,0 | 12,0 | 4,0 | 1.000 |
| 22781PT04 | M4 | 20,0 | 19,0 | 16,0 | 5,0 | 750 |
| 22782PT04 | M4 | 25,0 | 22,0 | 18,0 | 6,0 | 600 |
| 22800PT04 | M5 | 16,0 | 15,0 | 12,0 | 4,0 | 1.500 |
| 22801PT04 | M5 | 20,0 | 19,0 | 16,0 | 5,0 | 500 |
| 22802PT04 | M5 | 25,0 | 19,0 | 15,0 | 5,0 | 750 |
| 22806PT04 | M5 | 25,0 | 22,0 | 18,0 | 6,0 | 600 |
| 22821PT04 | M6 | 20,0 | 19,0 | 16,0 | 5,0 | 750 |
| 22822PT04 | M6 | 25,0 | 19,0 | 15,0 | 5,0 | 600 |
| 22823PT04 | M6 | 25,0 | 22,0 | 18,0 | 6,0 | 400 |
| 22825PT04 | M6 | 30,0 | 30,0 | 25,0 | 7,0 | 300 |
| 22827PT04 | M6 | 35,0 | 32,0 | 28,5 | 10,0 | 400 |
| 22829PT04 | M6 | 50,0 | 36,0 | 29,0 | 12,0 | 240 |
| 22866PT04 | M8 | 30,0 | 30,0 | 25,0 | 7,0 | 400 |
| 22867PT04 | M8 | 35,0 | 32,0 | 28,5 | 10,0 | 320 |
| 22868PT04 | M8 | 30,0 | 40,0 | 33,5 | 8,0 | 300 |
| 22869PT04 | M8 | 35,0 | 40,0 | 33,0 | 10,0 | 300 |
| 22872PT04 | M8 | 40,0 | 46,0 | 40,0 | 12,0 | 200 |
| 22873PT04 | M8 | 45,0 | 46,0 | 39,5 | 13,0 | 200 |
| 22874PT04 | M8 | 50,0 | 36,0 | 29,0 | 12,0 | 240 |
| 22875PT04 | M8 | 50,0 | 50,0 | 45,0 | 15,0 | 120 |
| 22876PT04 | M8 | 60,0 | 60,0 | 49,5 | 15,0 | 80 |
| 22878PT04 | M8 | 75,0 | 50,0 | 38,5 | 16,0 | 200 |
| 22880PT04 | M10 | 30,0 | 30,0 | 25,0 | 7,0 | 400 |
| 22881PT04 | M10 | 30,0 | 40,0 | 33,5 | 8,0 | 400 |
| 22882PT04 | M10 | 35,0 | 32,0 | 28,5 | 10,0 | 320 |
| 22883PT04 | M10 | 35,0 | 40,0 | 33,0 | 10,0 | 300 |
| 22886PT04 | M10 | 40,0 | 46,0 | 40,0 | 12,0 | 200 |
| 22887PT04 | M10 | 45,0 | 46,0 | 39,5 | 13,0 | 200 |
| 22888PT04 | M10 | 50,0 | 36,0 | 29,0 | 12,0 | 240 |
| 22889PT04 | M10 | 50,0 | 46,0 | 37,0 | 10,0 | 200 |

| Codice | Passo | A | B | C | D | Conf./pezzi |
|-----------|-------|------|------|------|------|-------------|
| 22890PT04 | M10 | 50,0 | 50,0 | 45,0 | 15,0 | 120 |
| 22891PT04 | M10 | 60,0 | 60,0 | 49,5 | 15,0 | 80 |
| 22893PT04 | M10 | 70,0 | 60,0 | 52,0 | 14,0 | 60 |
| 22894PT04 | M10 | 75,0 | 50,0 | 38,5 | 16,0 | 120 |
| 22901PT04 | M12 | 40,0 | 46,0 | 40,0 | 12,0 | 200 |
| 22902PT04 | M12 | 45,0 | 46,0 | 39,5 | 13,0 | 200 |
| 22903PT04 | M12 | 50,0 | 50,0 | 45,0 | 15,0 | 120 |
| 22905PT04 | M12 | 70,0 | 60,0 | 52,0 | 14,0 | 60 |
| 22906PT04 | M12 | 75,0 | 50,0 | 38,5 | 16,0 | 80 |
| 22910PT04 | M16 | 70,0 | 60,0 | 52,0 | 14,0 | 80 |