

# DISTANZIATORI METRICI M4 CON AGGANCIO RAPIDO Ø 5,0 X 5,0



## Descrizione tecnica

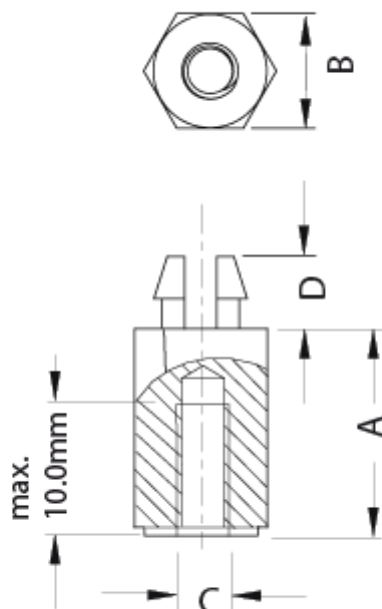
**Materiale:** PA 6.6

**Colore:** nero

**Autoestinguenza:** HB (UL 94)

**Temperatura esercizio:** -30°C ~ +150°C

Tutte le quote sono in mm



Codice	A	B	C	D	Foro	Spessore	Conf./pezzi
10029AA0105.0	5,0	8,0	M4	5,0	5,0 x 5,0	1,6	500
10029AA0106.0	6,0	8,0	M4	5,0	5,0 x 5,0	1,6	500
10029AA0107.0	7,0	8,0	M4	5,0	5,0 x 5,0	1,6	500
10029AA0108.0	8,0	8,0	M4	5,0	5,0 x 5,0	1,6	500
10029AA0109.0	9,0	8,0	M4	5,0	5,0 x 5,0	1,6	500
10029AA0110.0	10,0	8,0	M4	5,0	5,0 x 5,0	1,6	500
10029AA0111.0	11,0	8,0	M4	5,0	5,0 x 5,0	1,6	500
10029AA0112.0	12,0	8,0	M4	5,0	5,0 x 5,0	1,6	500
10029AA0113.0	13,0	8,0	M4	5,0	5,0 x 5,0	1,6	500
10029AA0114.0	14,0	8,0	M4	5,0	5,0 x 5,0	1,6	500
10029AA0115.0	15,0	8,0	M4	5,0	5,0 x 5,0	1,6	500
10029AA0116.0	16,0	8,0	M4	5,0	5,0 x 5,0	1,6	500
10029AA0117.0	17,0	8,0	M4	5,0	5,0 x 5,0	1,6	500
10029AA0118.0	18,0	8,0	M4	5,0	5,0 x 5,0	1,6	500
10029AA0119.0	19,0	8,0	M4	5,0	5,0 x 5,0	1,6	500
10029AA0120.0	20,0	8,0	M4	5,0	5,0 x 5,0	1,6	500
10029AA0121.0	21,0	8,0	M4	5,0	5,0 x 5,0	1,6	500
10029AA0122.0	22,0	8,0	M4	5,0	5,0 x 5,0	1,6	500
10029AA0123.0	23,0	8,0	M4	5,0	5,0 x 5,0	1,6	500
10029AA0124.0	24,0	8,0	M4	5,0	5,0 x 5,0	1,6	500
10029AA0125.0	25,0	8,0	M4	5,0	5,0 x 5,0	1,6	500
10029AA0126.0	26,0	8,0	M4	5,0	5,0 x 5,0	1,6	500
10029AA0127.0	27,0	8,0	M4	5,0	5,0 x 5,0	1,6	500
10029AA0128.0	28,0	8,0	M4	5,0	5,0 x 5,0	1,6	500
10029AA0129.0	29,0	8,0	M4	5,0	5,0 x 5,0	1,6	500
10029AA0130.0	30,0	8,0	M4	5,0	5,0 x 5,0	1,6	500
10029AA0131.0	31,0	8,0	M4	5,0	5,0 x 5,0	1,6	500
10029AA0132.0	32,0	8,0	M4	5,0	5,0 x 5,0	1,6	500
10029AA0133.0	33,0	8,0	M4	5,0	5,0 x 5,0	1,6	500
10029AA0134.0	34,0	8,0	M4	5,0	5,0 x 5,0	1,6	500
10029AA0135.0	35,0	8,0	M4	5,0	5,0 x 5,0	1,6	500

Codice	A	B	C	D	Foro	Spessore	Conf./pezzi
10029AA0136.0	36,0	8,0	M4	5,0	5,0 x 5,0	1,6	500
10029AA0137.0	37,0	8,0	M4	5,0	5,0 x 5,0	1,6	500
10029AA0138.0	38,0	8,0	M4	5,0	5,0 x 5,0	1,6	500
10029AA0139.0	39,0	8,0	M4	5,0	5,0 x 5,0	1,6	500
10029AA0140.0	40,0	8,0	M4	5,0	5,0 x 5,0	1,6	500
10029AA0141.0	41,0	8,0	M4	5,0	5,0 x 5,0	1,6	500
10029AA0142.0	42,0	8,0	M4	5,0	5,0 x 5,0	1,6	500
10029AA0143.0	43,0	8,0	M4	5,0	5,0 x 5,0	1,6	500
10029AA0144.0	44,0	8,0	M4	5,0	5,0 x 5,0	1,6	500
10029AA0145.0	45,0	8,0	M4	5,0	5,0 x 5,0	1,6	500
10029AA0146.0	46,0	8,0	M4	5,0	5,0 x 5,0	1,6	500
10029AA0147.0	47,0	8,0	M4	5,0	5,0 x 5,0	1,6	500
10029AA0148.0	48,0	8,0	M4	5,0	5,0 x 5,0	1,6	500
10029AA0149.0	49,0	8,0	M4	5,0	5,0 x 5,0	1,6	500
10029AA0150.0	50,0	8,0	M4	5,0	5,0 x 5,0	1,6	500
10029AA0151.0	51,0	8,0	M4	5,0	5,0 x 5,0	1,6	500
10029AA0152.0	52,0	8,0	M4	5,0	5,0 x 5,0	1,6	500
10029AA0153.0	53,0	8,0	M4	5,0	5,0 x 5,0	1,6	500
10029AA0154.0	54,0	8,0	M4	5,0	5,0 x 5,0	1,6	500
10029AA0155.0	55,0	8,0	M4	5,0	5,0 x 5,0	1,6	500
10029AA0156.0	56,0	8,0	M4	5,0	5,0 x 5,0	1,6	500
10029AA0157.0	57,0	8,0	M4	5,0	5,0 x 5,0	1,6	500
10029AA0158.0	58,0	8,0	M4	5,0	5,0 x 5,0	1,6	500
10029AA0159.0	59,0	8,0	M4	5,0	5,0 x 5,0	1,6	500
10029AA0160.0	60,0	8,0	M4	5,0	5,0 x 5,0	1,6	500
10029AA0161.0	61,0	8,0	M4	5,0	5,0 x 5,0	1,6	500