

DISTANZIATORI FILETTATI ESAGONALI M2



Descrizione tecnica

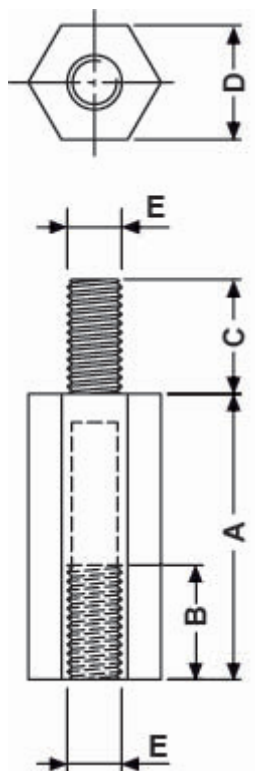
Materiale: PA 6.6

Colore: Naturale

Autoestinguenza: V2 (UL94)

Temperatura d'esercizio: -35°C ~ +85°C

Tutte le quote sono in mm



Codice	A	B	C	D	E	Conf./pezzi
11457AA0004.0	4,0	2,5	5,0	4,0	M2	1.000

Codice	A	B	C	D	E	Conf./pezzi
11457AA0005.0	5,0	3,0	5,0	4,0	M2	1.000
11457AA0005.5	5,5	3,0	5,0	4,0	M2	1.000
11457AA0006.0	6,0	4,0	5,0	4,0	M2	1.000
11457AA0006.5	6,5	4,0	5,0	4,0	M2	1.000
11457AA0007.0	7,0	4,0	5,0	4,0	M2	1.000
11457AA0008.0	8,0	5,0	5,0	4,0	M2	1.000
11457AA0009.0	9,0	5,0	5,0	4,0	M2	1.000
11457AA0010.0	10,0	5,0	5,0	4,0	M2	1.000
11457AA0011.0	11,0	5,0	5,0	4,0	M2	1.000
11457AA0012.0	12,0	5,0	5,0	4,0	M2	1.000
11457AA0013.0	13,0	5,0	5,0	4,0	M2	1.000
11457AA0014.0	14,0	5,0	5,0	4,0	M2	1.000
11457AA0015.0	15,0	5,0	5,0	4,0	M2	1.000
11457AA0016.0	16,0	5,0	5,0	4,0	M2	1.000
11457AA0017.0	17,0	5,0	5,0	4,0	M2	1.000
11457AA0018.0	18,0	5,0	5,0	4,0	M2	1.000
11457AA0019.0	19,0	5,0	5,0	4,0	M2	1.000
11457AA0020.0	20,0	5,0	5,0	4,0	M2	1.000
11457AA0021.0	21,0	5,0	5,0	4,0	M2	1.000
11457AA0022.0	22,0	5,0	5,0	4,0	M2	1.000
11457AA0023.0	23,0	5,0	5,0	4,0	M2	1.000
11457AA0024.0	24,0	5,0	5,0	4,0	M2	1.000
11457AA0025.0	25,0	5,0	5,0	4,0	M2	1.000
11457AA0026.0	26,0	5,0	5,0	4,0	M2	1.000
11457AA0027.0	27,0	5,0	5,0	4,0	M2	1.000
11457AA0028.0	28,0	5,0	5,0	4,0	M2	1.000