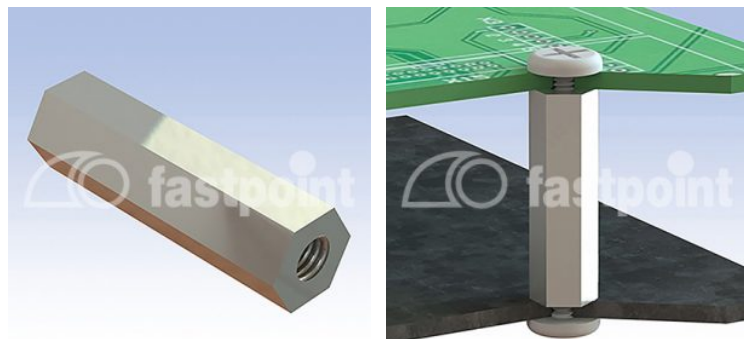


DISTANZIATORI F/F OTTONE E ACCIAIO

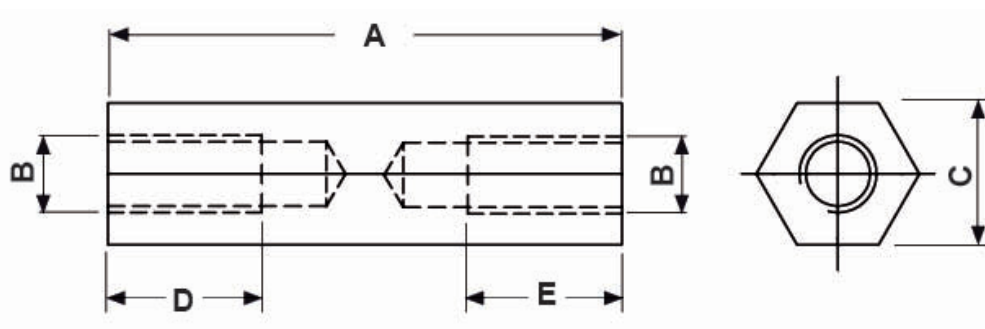


Descrizione tecnica

Materiale: ottone nichelato

Disponibile anche in **acciaio zincato**

Tutte le quote sono in mm



Codice	A	B	C	D	E	Conf./pezzi
7500MA92	10,0	M3	5,0	10,0	10,0	500
7501MA92	11,0	M3	5,0	11,0	11,0	500
7502MA92	12,0	M3	5,0	12,0	12,0	500
7503MA92	13,0	M3	5,0	13,0	13,0	500
7504MA92	14,0	M3	5,0	14,0	14,0	500
7505MA92	15,0	M3	5,0	15,0	15,0	500
7506MA92	16,0	M3	5,0	7,0	7,0	500
7507MA92	17,0	M3	5,0	7,0	7,0	500
7508MA92	18,0	M3	5,0	7,0	7,0	500
7509MA92	20,0	M3	5,0	7,0	7,0	500
7510MA92	22,0	M3	5,0	7,0	7,0	500

Codice	A	B	C	D	E	Conf./pezzi
7511MA92	25,0	M3	5,0	7,0	7,0	500
7512MA92	30,0	M3	5,0	7,0	7,0	500
7513MA92	32,0	M3	5,0	7,0	7,0	500
7514MA92	35,0	M3	5,0	7,0	7,0	500
7515MA92	40,0	M3	5,0	7,0	7,0	500
7516MA92	45,0	M3	5,0	7,0	7,0	500
7517MA92	5,0	M3	5,0	5,0	5,0	500
7518MA92	50,0	M3	5,0	7,0	7,0	500
7519MA92	6,0	M3	5,0	6,0	6,0	500
7520MA92	60,0	M3	5,0	7,0	7,0	500
7521MA92	7,0	M3	5,0	7,0	7,0	500
7522MA92	8,0	M3	5,0	8,0	8,0	500
7523MA92	9,0	M3	5,0	9,0	9,0	500
7524MA92	10,0	M4	6,0	10,0	10,0	500
7525MA92	12,0	M4	6,0	6,0	6,0	500
7526MA92	15,0	M4	6,0	6,0	6,0	500
7527MA92	18,0	M4	6,0	6,0	6,0	500
7528MA92	20,0	M4	6,0	6,0	6,0	500
7529MA92	25,0	M4	6,0	6,0	6,0	500
7530MA92	30,0	M4	6,0	6,0	6,0	500
7531MA92	35,0	M4	6,0	6,0	6,0	500
7532MA92	40,0	M4	6,0	6,0	6,0	500
7533MA92	45,0	M4	6,0	6,0	6,0	500
7534MA92	5,0	M4	6,0	5,0	5,0	500
7535MA92	50,0	M4	6,0	6,0	6,0	500
7536MA92	60,0	M4	6,0	6,0	6,0	500
7537MA92	8,0	M4	6,0	8,0	8,0	500