

DISTANZIATORI CILINDRICI DIAMETRO INTERNO 11,2



Descrizione tecnica

Materiale: PA 6 , 25%GV

Autoestinguenza: HB (UL 94)

Colore: nero

Temperatura esercizio: -35°C ~ +100°C

Su richiesta speciale:

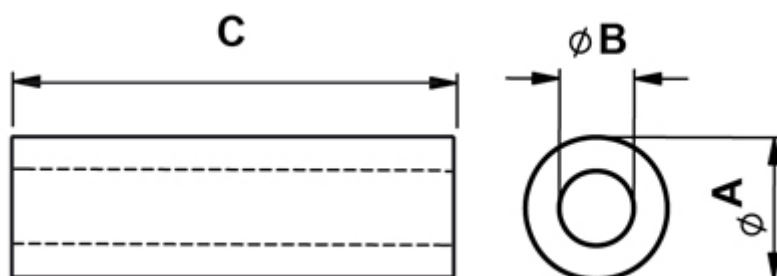
Materiale: polistirene

Autoestinguenza: HB (UL 94)

Colore: Bianco

Temperatura esercizio: -40°C ~ +70°C

Tutte le quote sono in mm



Codice	A	B	C	Conf./pezzi
10132BB0102.0	15,0	11,2	2,0	500
10132BB0103.0	15,0	11,2	3,0	500

Codice	A	B	C	Conf./pezzi
10132BB0104.0	15,0	11,2	4,0	500
10132BB0105.0	15,0	11,2	5,0	500
10132BB0106.0	15,0	11,2	6,0	500
10132BB0107.0	15,0	11,2	7,0	500
10132BB0108.0	15,0	11,2	8,0	500
10132BB0109.0	15,0	11,2	9,0	500
10132BB0110.0	15,0	11,2	10,0	500
10132BB0111.0	15,0	11,2	11,0	500
10132BB0112.0	15,0	11,2	12,0	500
10132BB0113.0	15,0	11,2	13,0	500
10132BB0114.0	15,0	11,2	14,0	500
10132BB0115.0	15,0	11,2	15,0	500
10132BB0116.0	15,0	11,2	16,0	500
10132BB0117.0	15,0	11,2	17,0	500
10132BB0118.0	15,0	11,2	18,0	500
10132BB0119.0	15,0	11,2	19,0	500
10132BB0120.0	15,0	11,2	20,0	500
10132BB0121.0	15,0	11,2	21,0	500
10132BB0122.0	15,0	11,2	22,0	500
10132BB0123.0	15,0	11,2	23,0	500
10132BB0124.0	15,0	11,2	24,0	500
10132BB0125.0	15,0	11,2	25,0	500
10132BB0126.0	15,0	11,2	26,0	500
10132BB0127.0	15,0	11,2	27,0	500
10132BB0128.0	15,0	11,2	28,0	500
10132BB0129.0	15,0	11,2	29,0	500
10132BB0130.0	15,0	11,2	30,0	500
10132BB0131.0	15,0	11,2	31,0	500
10132BB0132.0	15,0	11,2	32,0	500
10132BB0133.0	15,0	11,2	33,0	500
10132BB0134.0	15,0	11,2	34,0	500

Codice	A	B	C	Conf./pezzi
10132BB0135.0	15,0	11,2	35,0	500
10132BB0136.0	15,0	11,2	36,0	500
10132BB0137.0	15,0	11,2	37,0	500
10132BB0138.0	15,0	11,2	38,0	500
10132BB0139.0	15,0	11,2	39,0	500
10132BB0140.0	15,0	11,2	40,0	500
10132BB0141.0	15,0	11,2	41,0	500
10132BB0142.0	15,0	11,2	42,0	500
10132BB0143.0	15,0	11,2	43,0	500
10132BB0144.0	15,0	11,2	44,0	500
10132BB0145.0	15,0	11,2	45,0	500
10132BB0146.0	15,0	11,2	46,0	500
10132BB0147.0	15,0	11,2	47,0	500
10132BB0148.0	15,0	11,2	48,0	500
10132BB0149.0	15,0	11,2	49,0	500
10132BB0150.0	15,0	11,2	50,0	500