

# TAPAFINAL REDONDO



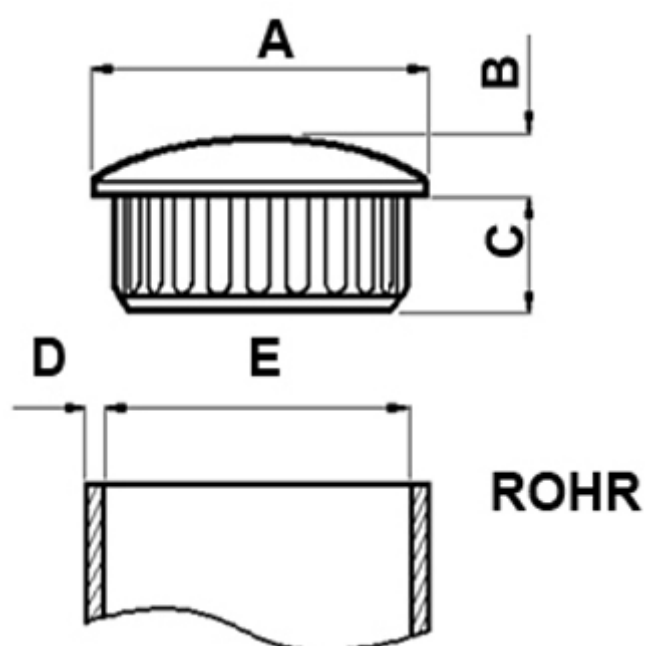
## Descripción Técnica

**Material:** ABS

**Color:** Negro, y disponible en Cromado bajo pedido mínimo

**Temperatura de trabajo:** -30°C ~ +90°C

Todas las medidas están indicadas en mm



Codigo	A	B	C	D	E	Conf./piezas
0705HA01	8,0	1,5	4,5	1,0	6,0	1.000
0706HA01	10,0	2,0	5,0	1,0	8,0	1.000
0707HA01	12,0	2,0	5,0	1,0	10,0	1.000
0708HA01	14,0	2,0	8,0	1,0	12,0	1.000

Codigo	A	B	C	D	E	Conf./piezas
0709HA01	16,0	3,0	8,0	1,2	13,6	1.000
0710HA01	18,0	3,0	8,0	1,2	15,6	1.000
0711HA01	19,0	3,0	9,0	1,2	16,6	500
0712HA01	20,0	3,0	8,0	1,2	17,6	500
0713HA01	22,0	3,0	8,0	1,2	19,6	500
0714HA01	25,0	4,0	11,0	1,2	22,6	500
0715HA01	28,0	4,0	10,0	1,2	25,6	250
0716HA01	30,0	5,0	10,0	1,2	27,6	250
0717HA01	32,0	4,0	10,0	1,2	29,6	250
0718HA01	35,0	3,0	10,0	1,2	32,6	200
0721HA01	45,0	4,0	11,0	1,5	42,0	200
0722HA01	50,0	5,0	11,0	1,5	47,0	200
0723HA01	60,0	5,0	11,0	1,5	57,0	100
0724HA01	70,0	5,0	11,0	1,5	67,0	100
0725HA01	80,0	5,0	11,0	1,5	77,0	100
0726HA01	90,0	5,0	11,0	1,5	87,0	50
1165HA01	16,0	3,0	8,0	1,0	14,0	1.000
1166HA01	16,0	3,0	8,0	1,5	13,0	1.000
1167HA01	18,0	3,0	8,0	1,0	16,0	1.000
1168HA01	18,0	3,0	8,0	1,5	15,0	1.000
1169HA01	19,0	3,0	9,0	1,5	16,0	500
1170HA01	20,0	3,0	8,0	1,0	18,0	500
1171HA01	22,0	3,0	8,0	1,0	20,0	500
1172HA01	22,0	3,0	8,0	1,5	19,0	500
1173HA01	25,0	4,0	11,0	2,0	21,0	500
1174HA01	25,0	4,0	11,0	1,5	22,0	500
1175HA01	25,0	4,0	11,0	1,0	23,0	500
1176HA01	28,0	4,0	10,0	2,0	24,0	250
1177HA01	28,0	4,0	10,0	1,5	25,0	250
1178HA01	28,0	4,0	10,0	1,0	26,0	250
1179HA01	30,0	5,0	10,0	1,5	27,0	250

Codigo	A	B	C	D	E	Conf./piezas
1180HA01	30,0	5,0	10,0	1,0	28,0	250
1181HA01	32,0	4,0	10,0	1,5	29,0	250
1182HA01	35,0	3,0	10,0	2,0	31,0	200
1183HA01	35,0	3,0	10,0	1,5	32,0	200
1184HA01	35,0	3,0	10,0	1,0	33,0	200
1185HA01	38,0	3,0	10,0	2,0	34,0	200
1186HA01	38,0	3,0	10,0	1,5	35,0	200
1187HA01	40,0	3,0	10,0	2,0	36,0	200
1188HA01	40,0	3,0	10,0	1,5	37,0	200
1189HA01	40,0	3,0	10,0	1,0	38,0	200
1190HA01	45,0	4,0	11,0	2,0	41,0	200
2039HA01	20,0	3,0	8,0	1,5	17,0	500
2040HA01	22,0	3,0	8,0	2,0	18,0	500
2041HA01	30,0	5,0	10,0	2,0	26,0	250
2042HA01	32,0	4,0	10,0	2,0	23,2	250
2043HA01	50,0	5,0	11,0	1,0	48,0	200
2044HA01	50,0	5,0	11,0	1,2	47,6	200
2045HA01	50,0	5,0	11,0	2,0	46,0	200
2046HA01	60,0	5,0	11,0	1,0	58,0	100
2047HA01	60,0	5,0	11,0	1,2	57,6	100
2048HA01	70,0	5,0	11,0	1,2	67,6	100
2049HA01	80,0	5,0	11,0	1,2	77,6	100
2050HA01	90,0	5,0	11,0	1,2	87,6	50