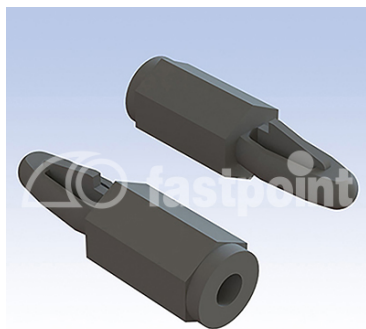


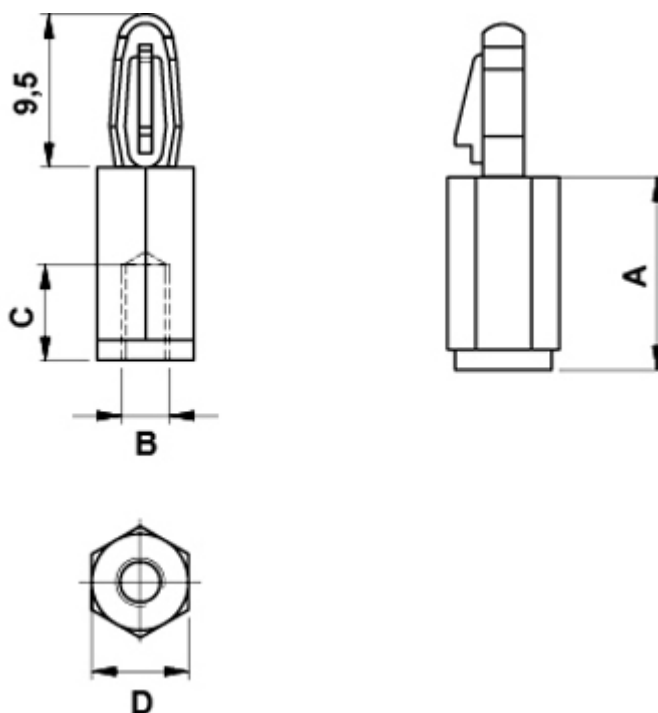
# SEPARADOR M3 CON CLIP ORIFICIO Ø 4.0 THICKNESS 1.9 MM



## Descripción Técnica

**Material:** PA66

**Color:** Negro **Autoextinguibilidad:** UL94-HB **Temperatura de trabajo:** -35°C ~ +130°C Todas las medidas están indicadas en mm



Codigo	A	B	C	D	Orificio	Espesor	Conf./piezas
8162AA0105.0	5,0	M3	3,0	6,0	Ø 4,0	1,9	1.000
8162AA0106.0	6,0	M3	4,0	6,0	Ø 4,0	1,9	1.000
8162AA0107.0	7,0	M3	5,0	6,0	Ø 4,0	1,9	1.000
8162AA0108.0	8,0	M3	6,0	6,0	Ø 4,0	1,9	1.000

Codigo	A	B	C	D	Orificio	Espesor	Conf./piezas
8162AA0109.0	9,0	M3	7,0	6,0	Ø 4,0	1,9	1.000
8162AA0110.0	10,0	M3	8,0	6,0	Ø 4,0	1,9	1.000
8162AA0111.0	11,0	M3	9,0	6,0	Ø 4,0	1,9	1.000
8162AA0112.0	12,0	M3	10,0	6,0	Ø 4,0	1,9	1.000
8162AA0113.0	13,0	M3	10,0	6,0	Ø 4,0	1,9	1.000
8162AA0114.0	14,0	M3	10,0	6,0	Ø 4,0	1,9	1.000
8162AA0115.0	15,0	M3	10,0	6,0	Ø 4,0	1,9	1.000
8162AA0116.0	16,0	M3	10,0	6,0	Ø 4,0	1,9	1.000
8162AA0117.0	17,0	M3	10,0	6,0	Ø 4,0	1,9	1.000
8162AA0118.0	18,0	M3	10,0	6,0	Ø 4,0	1,9	1.000
8162AA0119.0	19,0	M3	10,0	6,0	Ø 4,0	1,9	1.000
8162AA0120.0	20,0	M3	10,0	6,0	Ø 4,0	1,9	1.000
8162AA0121.0	21,0	M3	10,0	6,0	Ø 4,0	1,9	1.000
8162AA0122.0	22,0	M3	10,0	6,0	Ø 4,0	1,9	1.000
8162AA0123.0	23,0	M3	10,0	6,0	Ø 4,0	1,9	1.000
8162AA0124.0	24,0	M3	10,0	6,0	Ø 4,0	1,9	1.000
8162AA0125.0	25,0	M3	10,0	6,0	Ø 4,0	1,9	1.000
8162AA0126.0	26,0	M3	10,0	6,0	Ø 4,0	1,9	1.000
8162AA0127.0	27,0	M3	10,0	6,0	Ø 4,0	1,9	1.000
8162AA0128.0	28,0	M3	10,0	6,0	Ø 4,0	1,9	1.000
8162AA0129.0	29,0	M3	10,0	6,0	Ø 4,0	1,9	1.000
8162AA0130.0	30,0	M3	10,0	6,0	Ø 4,0	1,9	1.000
8162AA0131.0	31,0	M3	10,0	6,0	Ø 4,0	1,9	1.000
8162AA0132.0	32,0	M3	10,0	6,0	Ø 4,0	1,9	1.000
8162AA0133.0	33,0	M3	10,0	6,0	Ø 4,0	1,9	1.000
8162AA0134.0	34,0	M3	10,0	6,0	Ø 4,0	1,9	1.000
8162AA0135.0	35,0	M3	10,0	6,0	Ø 4,0	1,9	1.000
8162AA0136.0	36,0	M3	10,0	6,0	Ø 4,0	1,9	1.000
8162AA0137.0	37,0	M3	10,0	6,0	Ø 4,0	1,9	1.000
8162AA0138.0	38,0	M3	10,0	6,0	Ø 4,0	1,9	1.000
8162AA0139.0	39,0	M3	10,0	6,0	Ø 4,0	1,9	1.000

Codigo	A	B	C	D	Orificio	Espesor	Conf./piezas
8162AA0140.0	40,0	M3	10,0	6,0	Ø 4,0	1,9	1.000
8162AA0141.0	41,0	M3	10,0	6,0	Ø 4,0	1,9	1.000
8162AA0142.0	42,0	M3	10,0	6,0	Ø 4,0	1,9	1.000
8162AA0143.0	43,0	M3	10,0	6,0	Ø 4,0	1,9	1.000
8162AA0144.0	44,0	M3	10,0	6,0	Ø 4,0	1,9	1.000
8162AA0145.0	45,0	M3	10,0	6,0	Ø 4,0	1,9	1.000
8162AA0146.0	46,0	M3	10,0	6,0	Ø 4,0	1,9	1.000
8162AA0147.0	47,0	M3	10,0	6,0	Ø 4,0	1,9	1.000
8162AA0148.0	48,0	M3	10,0	6,0	Ø 4,0	1,9	1.000
8162AA0149.0	49,0	M3	10,0	6,0	Ø 4,0	1,9	1.000
8162AA0150.0	50,0	M3	10,0	6,0	Ø 4,0	1,9	1.000
8162AA0151.0	51,0	M3	10,0	6,0	Ø 4,0	1,9	1.000
8162AA0152.0	52,0	M3	10,0	6,0	Ø 4,0	1,9	1.000
8162AA0153.0	53,0	M3	10,0	6,0	Ø 4,0	1,9	1.000
8162AA0154.0	54,0	M3	10,0	6,0	Ø 4,0	1,9	1.000
8162AA0155.0	55,0	M3	10,0	6,0	Ø 4,0	1,9	1.000
8162AA0156.0	56,0	M3	10,0	6,0	Ø 4,0	1,9	1.000
8162AA0157.0	57,0	M3	10,0	6,0	Ø 4,0	1,9	1.000
8162AA0158.0	58,0	M3	10,0	6,0	Ø 4,0	1,9	1.000
8162AA0159.0	59,0	M3	10,0	6,0	Ø 4,0	1,9	1.000
8162AA0160.0	60,0	M3	10,0	6,0	Ø 4,0	1,9	1.000
8162AA0161.0	61,0	M3	10,0	6,0	Ø 4,0	1,9	1.000