

CONTERA REDONDA O TOPE



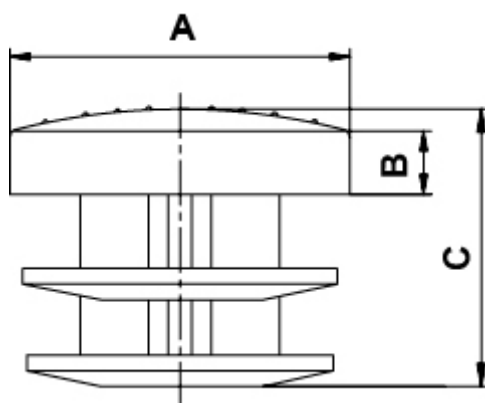
Descripción Técnica

Material: Polietileno PE-BD

Color: Negro

Temperatura de trabajo: -30°C ~ +70°C

Todas las medidas están indicadas en mm



Codigo	A	B	C	Type	Conf./piezas
3435EA01	10,0	5,0	13,0	3	1.000
3436EA01	12,0	5,0	14,0	3	1.000
3437EA01	14,0	5,0	14,0	3	1.000
3438EA01	16,0	5,0	16,0	3	1.000
3439EA01	18,0	5,0	13,0	3	1.000
3440EA01	20,0	5,0	13,0	3	1.000
3441EA01	22,0	5,0	13,0	3	1.000
3442EA01	24,0	5,0	20,0	3	1.000
3443EA01	25,0	5,0	19,0	3	1.000

Codigo	A	B	C	Type	Conf./piezas
3444EA01	26,0	5,0	20,0	3	1.000
3445EA01	28,0	5,0	19,0	3	1.000
3446EA01	30,0	5,0	19,0	3	1.000
3447EA01	32,0	5,0	19,0	3	1.000
3448EA01	35,0	5,0	20,0	3	1.000
3449EA01	38,0	5,0	22,0	3	1.000
3450EA01	40,0	5,0	22,0	3	1.000
3451EA01	45,0	5,0	30,0	3	1.000
3452EA01	50,0	5,0	22,0	3	1.000
3453EA01	60,0	5,0	24,0	3	1.000
3454EA01	80,0	5,0	33,0	3	1.000