

SQUARE TUBE PLUGS



Technical description

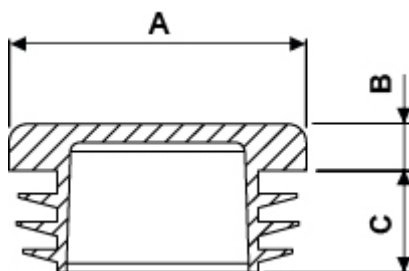
Material: PE-LD

Colour: Black

Working temperature: -30°C ~ +70°C

D: Pipe thickness

All dimensions are in mm



Code	A	B	C	D	MOQ-Pcs
9500EA01	10,0 x 10,0	4,0	11,5	1,2 - 2,5	1.000
9501EA01	12,0 x 12,0	4,0	11,5	1,0 - 2,0	1.000
9502EA01	13,0 x 13,0	4,0	11,5	1,0 - 2,0	1.000
9503EA01	15,0 x 15,0	5,0	11,5	1,0 - 2,0	1.000
9504EA01	16,0 x 16,0	5,0	11,5	1,0 - 2,5	1.000
9505EA01	18,0 x 18,0	5,0	11,5	1,5 - 3,0	1.000
9506EA01	20,0 x 20,0	5,0	11,5	1,0 - 2,2	1.000
9507EA01	22,0 x 22,0	5,0	11,5	1,0 - 3,5	1.000
9508EA01	25,0 x 25,0	5,0	11,5	1,2 - 2,2	1.000
9509EA01	28,0 x 28,0	5,0	11,5	2,0 - 3,0	1.000
9510EA01	30,0 x 30,0	5,0	11,5	1,2 - 2,2	500
9511EA01	30,0 x 30,0	5,0	11,5	2,5 - 4,5	500

Code	A	B	C	D	MOQ-Pcs
9512EA01	32,0 x 32,0	5,0	11,5	1,5 - 3,5	500
9513EA01	35,0 x 35,0	5,0	14,5	1,0 - 2,5	500
9514EA01	35,0 x 35,0	5,0	14,5	3,0 - 5,0	500
9515EA01	40,0 x 40,0	5,0	15,0	1,5 - 2,5	500
9516EA01	40,0 x 40,0	5,0	14,5	3,0 - 5,0	500
9517EA01	45,0 x 45,0	5,0	14,5	1,0 - 3,0	500
9518EA01	50,0 x 50,0	4,2	13,5	1,5 - 3,0	500
9519EA01	50,0 x 50,0	6,5	24,5	2,6 - 4,9	450
9520EA01	50,0 x 50,0	5,0	19,0	2,6 - 5,0	500
9521EA01	50,0 x 50,0	5,0	14,5	3,0 - 5,0	500
9522EA01	55,0 x 55,0	5,0	14,5	2,0-4,5	500
9523EA01	60,0 x 60,0	5,0	18,0	1,5 - 3,5	100
9524EA01	60,0 x 60,0	6,5	17,5	2,6 - 4,0	100
9525EA01	60,0 x 60,0	4,0	15,0	5,0	100
9526EA01	65,0 x 65,0	5,0	21,0	2,0 - 4,0	100
9527EA01	70,0 x 70,0	5,0	19,0	2,0-4,5	100
9528EA01	70,0 x 70,0	5,0	17,0	5,0	100
9529EA01	80,0 x 80,0	6,0	21,0	2,0 - 4,0	100
9530EA01	80,0 x 80,0	8,0	24,0	2,9 - 5,0	100
9531EA01	90,0 x 90,0	6,0	18,0	3,0 - 5,0	100
9532EA01	100,0 x 100,0	7,0	24,0	1,0 - 4,0	100
9533EA01	100,0 x 100,0	5,0	23,0	3,0 - 6,0	100