

## SPECIAL GROMMETS



### Technical description

**Material:** PVC

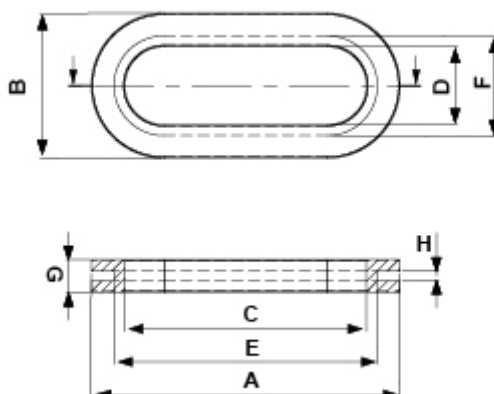
**Colour:** Black

**Operating temperature:**

**-PVC:** -25°C ~ +60°C

**-TPE:** -28°C ~ +90°C available by special request.

All dimensions are in mm.



Code	A	B	C	D	E	F	G	H	MOQ-Pcs
2425CA01	35,0	14,0	31,0	10,0	34,0	13,0	5,0	1,0	1.000
2426CA01	69,0	32,0	55,0	18,0	59,0	22,0	7,0	2,0	1.000
2427CA01	74,0	32,0	62,0	20,0	66,0	25,0	7,0	2,0	1.000
2427CA01M	74,0	32,0	62,0	20,0	66,0	25,0	7,0	2,0	500
2428CA01	77,0	33,0	63,0	19,0	69,0	25,0	7,0	2,0	1.000