

ROUND SPACERS INNER DIAM. 3,2 / OUTER DIAM. 6,0



Technical description

Material: PA 6 , 25%GV

UL Flammability: HB (UL 94)

Colour: Black

Operating temperature: -35°C ~ +100°C

Alternative:

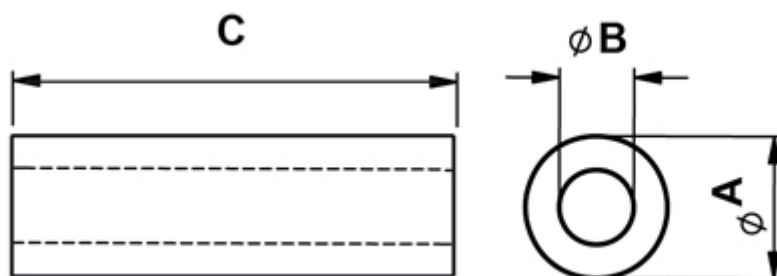
Material: polystyrene

UL Flammability: HB (UL 94)

Colour: White

Operating temperature: -40°C ~ +70°C

All dimensions are in mm.



Code	A	B	C	MOQ-Pcs
10096BB0102.0	6,0	3,2	2,0	500
10096BB0103.0	6,0	3,2	3,0	500

Code	A	B	C	MOQ-Pcs
10096BB0104.0	6,0	3,2	4,0	500
10096BB0105.0	6,0	3,2	5,0	500
10096BB0106.0	6,0	3,2	6,0	500
10096BB0107.0	6,0	3,2	7,0	500
10096BB0108.0	6,0	3,2	8,0	500
10096BB0109.0	6,0	3,2	9,0	500
10096BB0110.0	6,0	3,2	10,0	500
10096BB0111.0	6,0	3,2	11,0	500
10096BB0112.0	6,0	3,2	12,0	500
10096BB0113.0	6,0	3,2	13,0	500
10096BB0114.0	6,0	3,2	14,0	500
10096BB0115.0	6,0	3,2	15,0	500
10096BB0116.0	6,0	3,2	16,0	500
10096BB0117.0	6,0	3,2	17,0	500
10096BB0118.0	6,0	3,2	18,0	500
10096BB0119.0	6,0	3,2	19,0	500
10096BB0120.0	6,0	3,2	20,0	500
10096BB0121.0	6,0	3,2	21,0	500
10096BB0122.0	6,0	3,2	22,0	500
10096BB0123.0	6,0	3,2	23,0	500
10096BB0124.0	6,0	3,2	24,0	500
10096BB0125.0	6,0	3,2	25,0	500
10096BB0126.0	6,0	3,2	26,0	500
10096BB0127.0	6,0	3,2	27,0	500
10096BB0128.0	6,0	3,2	28,0	500
10096BB0129.0	6,0	3,2	29,0	500
10096BB0130.0	6,0	3,2	30,0	500
10096BB0131.0	6,0	3,2	31,0	500
10096BB0132.0	6,0	3,2	32,0	500
10096BB0133.0	6,0	3,2	33,0	500
10096BB0134.0	6,0	3,2	34,0	500

Code	A	B	C	MOQ-Pcs
10096BB0135.0	6,0	3,2	35,0	500
10096BB0136.0	6,0	3,2	36,0	500
10096BB0137.0	6,0	3,2	37,0	500
10096BB0138.0	6,0	3,2	38,0	500
10096BB0139.0	6,0	3,2	39,0	500
10096BB0140.0	6,0	3,2	40,0	500
10096BB0141.0	6,0	3,2	41,0	500
10096BB0142.0	6,0	3,2	42,0	500
10096BB0143.0	6,0	3,2	43,0	500
10096BB0144.0	6,0	3,2	44,0	500
10096BB0145.0	6,0	3,2	45,0	500
10096BB0146.0	6,0	3,2	46,0	500
10096BB0147.0	6,0	3,2	47,0	500
10096BB0148.0	6,0	3,2	48,0	500
10096BB0149.0	6,0	3,2	49,0	500
10096BB0150.0	6,0	3,2	50,0	500
10096BB0151.0	6,0	3,2	51,0	500
10096BB0152.0	6,0	3,2	52,0	500
10096BB0153.0	6,0	3,2	53,0	500
10096BB0154.0	6,0	3,2	54,0	500
10096BB0155.0	6,0	3,2	55,0	500
10096BB0156.0	6,0	3,2	56,0	500
10096BB0157.0	6,0	3,2	57,0	500
10096BB0158.0	6,0	3,2	58,0	500
10096BB0159.0	6,0	3,2	59,0	500
10096BB0160.0	6,0	3,2	60,0	500