

## ROUND SPACERS INNER DIAM. 2,7 OUTER DIAM. 6,0



### Technical description

**Material:** PA 6 , 25%GV

**UL Flammability:** HB (UL 94)

**Colour:** Black

**Operating temperature:** -35°C ~ +100°C

Alternative:

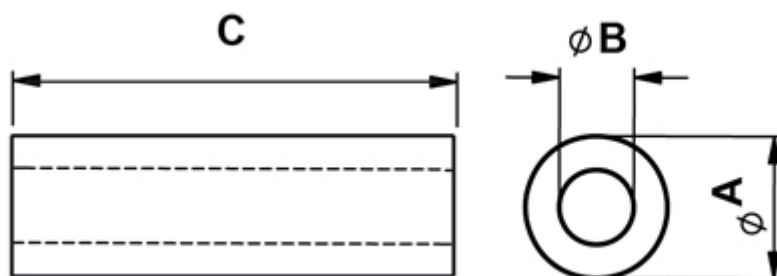
**Material:** polystyrene

**UL Flammability:** HB (UL 94)

**Colour:** White

**Operating temperature:** -40°C ~ +70°C

All dimensions are in mm.



Code	A	B	C	MOQ-Pcs
10095BB0102.0	6,0	2,7	2,0	500
10095BB0103.0	6,0	2,7	3,0	500

Code	A	B	C	MOQ-Pcs
10095BB0104.0	6,0	2,7	4,0	500
10095BB0105.0	6,0	2,7	5,0	500
10095BB0106.0	6,0	2,7	6,0	500
10095BB0107.0	6,0	2,7	7,0	500
10095BB0108.0	6,0	2,7	8,0	500
10095BB0109.0	6,0	2,7	9,0	500
10095BB0110.0	6,0	2,7	10,0	500
10095BB0111.0	6,0	2,7	11,0	500
10095BB0112.0	6,0	2,7	12,0	500
10095BB0113.0	6,0	2,7	13,0	500
10095BB0114.0	6,0	2,7	14,0	500
10095BB0115.0	6,0	2,7	15,0	500
10095BB0116.0	6,0	2,7	16,0	500
10095BB0117.0	6,0	2,7	17,0	500
10095BB0118.0	6,0	2,7	18,0	500
10095BB0119.0	6,0	2,7	19,0	500
10095BB0120.0	6,0	2,7	20,0	500
10095BB0121.0	6,0	2,7	21,0	500
10095BB0122.0	6,0	2,7	22,0	500
10095BB0123.0	6,0	2,7	23,0	500
10095BB0124.0	6,0	2,7	24,0	500
10095BB0125.0	6,0	2,7	25,0	500
10095BB0126.0	6,0	2,7	26,0	500
10095BB0127.0	6,0	2,7	27,0	500
10095BB0128.0	6,0	2,7	28,0	500
10095BB0129.0	6,0	2,7	29,0	500
10095BB0130.0	6,0	2,7	30,0	500
10095BB0131.0	6,0	2,7	31,0	500
10095BB0132.0	6,0	2,7	32,0	500
10095BB0133.0	6,0	2,7	33,0	500
10095BB0134.0	6,0	2,7	34,0	500

Code	A	B	C	MOQ-Pcs
10095BB0135.0	6,0	2,7	35,0	500
10095BB0136.0	6,0	2,7	36,0	500
10095BB0137.0	6,0	2,7	37,0	500
10095BB0138.0	6,0	2,7	38,0	500
10095BB0139.0	6,0	2,7	39,0	500
10095BB0140.0	6,0	2,7	40,0	500
10095BB0141.0	6,0	2,7	41,0	500
10095BB0142.0	6,0	2,7	42,0	500
10095BB0143.0	6,0	2,7	43,0	500
10095BB0144.0	6,0	2,7	44,0	500
10095BB0145.0	6,0	2,7	45,0	500
10095BB0146.0	6,0	2,7	46,0	500
10095BB0147.0	6,0	2,7	47,0	500
10095BB0148.0	6,0	2,7	48,0	500
10095BB0149.0	6,0	2,7	49,0	500
10095BB0150.0	6,0	2,7	50,0	500
10095BB0151.0	6,0	2,7	51,0	500
10095BB0152.0	6,0	2,7	52,0	500
10095BB0153.0	6,0	2,7	53,0	500
10095BB0154.0	6,0	2,7	54,0	500
10095BB0155.0	6,0	2,7	55,0	500