

ROUND Ø 5,0 F/M METRIC M2,5 SPACERS



Technical description

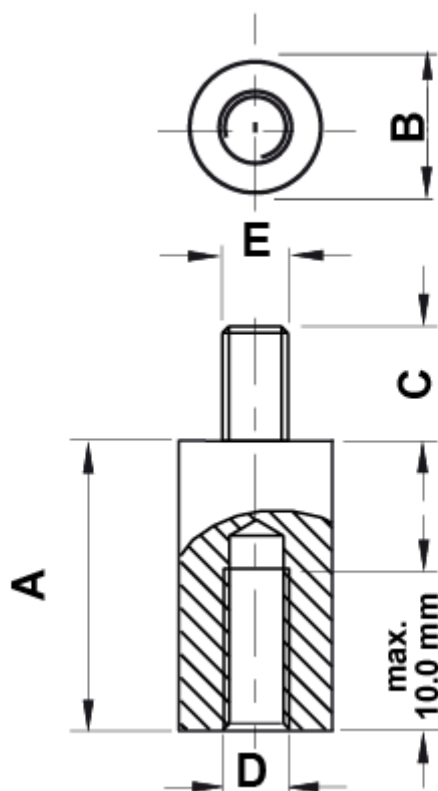
Material: PA 6.6

Colour: Black

UL Flammability: HB (UL 94)

Operating temperature: -30°C ~ +150°C

All dimensions are in mm.



Code	A	B	C	D	E	MOQ-Pcs
10030AA0104.0	4,0	Ø 5,0	8,0	M2.5	M2.5	500

Code	A	B	C	D	E	MOQ-Pcs
10030AA0105.0	5,0	Ø 5,0	8,0	M2.5	M2.5	500
10030AA0106.0	6,0	Ø 5,0	8,0	M2.5	M2.5	500
10030AA0107.0	7,0	Ø 5,0	8,0	M2.5	M2.5	500
10030AA0108.0	8,0	Ø 5,0	8,0	M2.5	M2.5	500
10030AA0109.0	9,0	Ø 5,0	8,0	M2.5	M2.5	500
10030AA0110.0	10,0	Ø 5,0	8,0	M2.5	M2.5	500
10030AA0111.0	11,0	Ø 5,0	8,0	M2.5	M2.5	500
10030AA0112.0	12,0	Ø 5,0	8,0	M2.5	M2.5	500
10030AA0113.0	13,0	Ø 5,0	8,0	M2.5	M2.5	500
10030AA0114.0	14,0	Ø 5,0	8,0	M2.5	M2.5	500
10030AA0115.0	15,0	Ø 5,0	8,0	M2.5	M2.5	500
10030AA0116.0	16,0	Ø 5,0	8,0	M2.5	M2.5	500
10030AA0117.0	17,0	Ø 5,0	8,0	M2.5	M2.5	500
10030AA0118.0	18,0	Ø 5,0	8,0	M2.5	M2.5	500
10030AA0119.0	19,0	Ø 5,0	8,0	M2.5	M2.5	500
10030AA0120.0	20,0	Ø 5,0	8,0	M2.5	M2.5	500
10030AA0121.0	21,0	Ø 5,0	8,0	M2.5	M2.5	500
10030AA0122.0	22,0	Ø 5,0	8,0	M2.5	M2.5	500
10030AA0123.0	23,0	Ø 5,0	8,0	M2.5	M2.5	500
10030AA0124.0	24,0	Ø 5,0	8,0	M2.5	M2.5	500
10030AA0125.0	25,0	Ø 5,0	8,0	M2.5	M2.5	500
10030AA0126.0	26,0	Ø 5,0	8,0	M2.5	M2.5	500
10030AA0127.0	27,0	Ø 5,0	8,0	M2.5	M2.5	500
10030AA0128.0	28,0	Ø 5,0	8,0	M2.5	M2.5	500
10030AA0129.0	29,0	Ø 5,0	8,0	M2.5	M2.5	500
10030AA0130.0	30,0	Ø 5,0	8,0	M2.5	M2.5	500
10030AA0131.0	31,0	Ø 5,0	8,0	M2.5	M2.5	500
10030AA0132.0	32,0	Ø 5,0	8,0	M2.5	M2.5	500
10030AA0133.0	33,0	Ø 5,0	8,0	M2.5	M2.5	500
10030AA0134.0	34,0	Ø 5,0	8,0	M2.5	M2.5	500
10030AA0135.0	35,0	Ø 5,0	8,0	M2.5	M2.5	500

Code	A	B	C	D	E	MOQ-Pcs
10030AA0136.0	36,0	Ø 5,0	8,0	M2.5	M2.5	500
10030AA0137.0	37,0	Ø 5,0	8,0	M2.5	M2.5	500
10030AA0138.0	38,0	Ø 5,0	8,0	M2.5	M2.5	500
10030AA0139.0	39,0	Ø 5,0	8,0	M2.5	M2.5	500
10030AA0140.0	40,0	Ø 5,0	8,0	M2.5	M2.5	500
10030AA0141.0	41,0	Ø 5,0	8,0	M2.5	M2.5	500
10030AA0142.0	42,0	Ø 5,0	8,0	M2.5	M2.5	500
10030AA0143.0	43,0	Ø 5,0	8,0	M2.5	M2.5	500
10030AA0144.0	44,0	Ø 5,0	8,0	M2.5	M2.5	500
10030AA0145.0	45,0	Ø 5,0	8,0	M2.5	M2.5	500
10030AA0146.0	46,0	Ø 5,0	8,0	M2.5	M2.5	500
10030AA0147.0	47,0	Ø 5,0	8,0	M2.5	M2.5	500
10030AA0148.0	48,0	Ø 5,0	8,0	M2.5	M2.5	500
10030AA0149.0	49,0	Ø 5,0	8,0	M2.5	M2.5	500
10030AA0150.0	50,0	Ø 5,0	8,0	M2.5	M2.5	500
10030AA0151.0	51,0	Ø 5,0	8,0	M2.5	M2.5	500
10030AA0152.0	52,0	Ø 5,0	8,0	M2.5	M2.5	500
10030AA0153.0	53,0	Ø 5,0	8,0	M2.5	M2.5	500
10030AA0154.0	54,0	Ø 5,0	8,0	M2.5	M2.5	500
10030AA0155.0	55,0	Ø 5,0	8,0	M2.5	M2.5	500