

ROUND Ø 4,0 F/F METRIC M2 SPACERS



Technical description

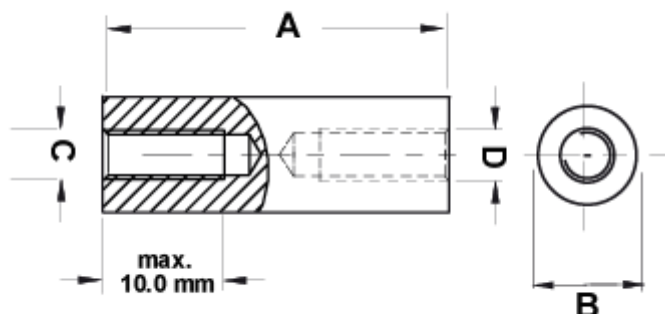
Material: PA 6 , 25%GV

UL Flammability: HB (UL 94)

Colour: Black

Operating temperature: -30°C ~ +110°C

All dimensions are in mm.



Code	A	B	C	D	MOQ-Pcs
10036BB0105.0	5,0	Ø 4,0	M2	M2	500
10036BB0106.0	6,0	Ø 4,0	M2	M2	500
10036BB0107.0	7,0	Ø 4,0	M2	M2	500
10036BB0108.0	8,0	Ø 4,0	M2	M2	500
10036BB0109.0	9,0	Ø 4,0	M2	M2	500
10036BB0110.0	10,0	Ø 4,0	M2	M2	500
10036BB0111.0	11,0	Ø 4,0	M2	M2	500
10036BB0112.0	12,0	Ø 4,0	M2	M2	500

Code	A	B	C	D	MOQ-Pcs
10036BB0113.0	13,0	Ø 4,0	M2	M2	500
10036BB0114.0	14,0	Ø 4,0	M2	M2	500
10036BB0115.0	15,0	Ø 4,0	M2	M2	500
10036BB0116.0	16,0	Ø 4,0	M2	M2	500
10036BB0117.0	17,0	Ø 4,0	M2	M2	500
10036BB0118.0	18,0	Ø 4,0	M2	M2	500
10036BB0119.0	19,0	Ø 4,0	M2	M2	500
10036BB0120.0	20,0	Ø 4,0	M2	M2	500
10036BB0121.0	21,0	Ø 4,0	M2	M2	500
10036BB0122.0	22,0	Ø 4,0	M2	M2	500
10036BB0123.0	23,0	Ø 4,0	M2	M2	500
10036BB0124.0	24,0	Ø 4,0	M2	M2	500
10036BB0125.0	25,0	Ø 4,0	M2	M2	500
10036BB0126.0	26,0	Ø 4,0	M2	M2	500
10036BB0127.0	27,0	Ø 4,0	M2	M2	500
10036BB0128.0	28,0	Ø 4,0	M2	M2	500
10036BB0129.0	29,0	Ø 4,0	M2	M2	500
10036BB0130.0	30,0	Ø 4,0	M2	M2	500
10036BB0131.0	31,0	Ø 4,0	M2	M2	500
10036BB0132.0	32,0	Ø 4,0	M2	M2	500
10036BB0133.0	33,0	Ø 4,0	M2	M2	500
10036BB0134.0	34,0	Ø 4,0	M2	M2	500
10036BB0135.0	35,0	Ø 4,0	M2	M2	500
10036BB0136.0	36,0	Ø 4,0	M2	M2	500
10036BB0137.0	37,0	Ø 4,0	M2	M2	500
10036BB0138.0	38,0	Ø 4,0	M2	M2	500
10036BB0139.0	39,0	Ø 4,0	M2	M2	500
10036BB0140.0	40,0	Ø 4,0	M2	M2	500
10036BB0141.0	41,0	Ø 4,0	M2	M2	500
10036BB0142.0	42,0	Ø 4,0	M2	M2	500
10036BB0143.0	43,0	Ø 4,0	M2	M2	500

Code	A	B	C	D	MOQ-Pcs
10036BB0144.0	44,0	Ø 4,0	M2	M2	500
10036BB0145.0	45,0	Ø 4,0	M2	M2	500