

ROUND LAMELLAR PLUGS



Technical description

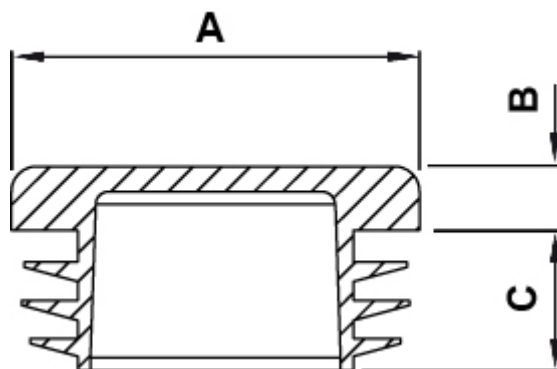
Material: Polyethylene LD-PE

Colour: Black

Operating temperature: -30°C ~ +60°C

D= pipe internal diameter

All dimensions are in mm.



Code	A	B	C	D	MOQ-Pcs
9300EA01	10,0	3,5	11,5	7,0 - 8,4	1.000
9301EA01	12,0	3,5	11,5	8,0 - 10,4	1.000
9302EA01	13,0	4,0	11,0	10,0 - 11,5	1.000
9303EA01	14,0	4,5	11,5	11,0 - 13,0	1.000
9304EA01	15,0	4,0	11,5	11,5 - 13,5	1.000
9305EA01	16,0	5,0	11,0	12,0 - 14,5	1.000
9306EA01	18,0	5,0	11,5	14,0 - 17,0	1.000
9307EA01	19,0	4,5	11,5	15,0 - 17,0	1.000

Code	A	B	C	D	MOQ-Pcs
9308EA01	20,0	4,5	11,5	15,0 - 17,5	1.000
9309EA01	21,0	4,5	11,5	17,0 - 19,4	1.000
9310EA01	22,0	4,5	11,5	17,5 - 20,5	1.000
9311EA01	23,0	4,5	11,5	19,0 - 21,5	1.000
9312EA01	24,0	5,0	11,5	19,0 - 22,0	1.000
9313EA01	25,0	4,5	11,5	20,5 - 23,0	1.000
9314EA01	25,0	4,5	11,5	17,5 - 20,5	1.000
9315EA01	26,0	4,0	11,5	20,5 - 23,5	1.000
9316EA01	27,0	5,0	12,0	21,0 - 25,0	1.000
9317EA01	28,0	5,0	12,0	23,0 - 25,5	1.000
9318EA01	30,0	5,0	11,0	24,0 - 28,0	500
9319EA01	30,0	5,0	11,5	21,0 - 25,0	1.250
9320EA01	32,0	5,0	12,0	26,0 - 30,0	500
9321EA01	34,0	5,0	11,5	28,0 - 32,0	500
9322EA01	35,0	4,5	11,5	30,5 - 33,4	500
9323EA01	36,0	4,5	11,5	31,0 - 33,5	500
9324EA01	37,0	5,0	11,5	31,0 - 35,0	500
9325EA01	38,0	5,0	11,0	32,0 - 36,0	500
9326EA01	40,0	5,0	11,5	34,0 - 38,0	500
9327EA01	40,0	5,0	11,5	30,0 - 34,0	500
9328EA01	40,0	4,5	11,5	34,0 - 36,0	500
9329EA01	42,0	4,5	11,5	38,5 - 40,5	500
9330EA01	42,0	5,0	11,5	37,0-40,4	500
9331EA01	42,0	5,0	11,5	32,0-36,0	500
9332EA01	45,0	5,0	11,5	41,0 - 42,5	500
9333EA01	48,0	5,0	18,0	43,0 - 45,5	500
9334EA01	50,0	4,5	10,0	46,0 - 48,0	500
9335EA01	50,0	5,0	11,5	41,0 - 45,0	500
9336EA01	50,0	5,0	11,5	37,0 - 41,0	500
9337EA01	52,0	5,0	14,5	45,0 - 49,0	500
9338EA01	55,0	5,0	14,4	49,0 - 53,0	500

Code	A	B	C	D	MOQ-Pcs
9339EA01	60,0	5,0	18,0	54,0 - 57,0	100
9340EA01	60,0	5,0	16,5	50,0 - 54,0	100
9341EA01	65,0	5,0	21,0	58,0 - 62,0	100
9342EA01	70,0	5,0	21,0	61,0 - 66,0	100
9343EA01	75,0	5,0	21,5	68,0 - 73,0	100
9344EA01	76,0	5,0	21,5	68,1 - 72,9	100
9345EA01	80,0	5,0	21,0	74,0 - 77,0	100
9346EA01	85,0	6,0	21,0	78,0 - 82,0	100
9347EA01	89,0	6,0	21,0	80,9 - 85,3	100
9348EA01	90,0	5,0	21,0	82,0 - 87,0	100
9349EA01	90,0	5,0	20,0	80,0 - 85,0	100
9350EA01	100,0	6,0	28,0	91,0 - 96,0	100
9351EA01	108,0	6,0	28,0	98,0-104,2	100
9352EA01	110,0	6,0	28,0	101,0-106,0	100
9353EA01	125,0	6,0	34,0	113,0-121,0	100
9354EA01	150,0	6,0	34,0	136,0-146,0	100
9355EA01	160,0	6,0	34,0	146,0-155,0	100